

# L-BLAST 1000 High-performance compact high-speed camera & MAP2 Drone kit



**High light-sensitive high-speed camera with Full HD resolution of 1920 x 1080 pixel @ up to 1000 fps.**

The L-Blast is particularly suited for all applications where a compact, portable, high resolution and robust camera is essential. The highly light-sensitive sensor covers the most ambitious application in blasting application.

**High light sensitivity** – with 1920 x 1080 pixel sensor with newest 10 micron pixel technology the L-Blast 1000 series offers ISO 3600 for color and ISO 8'000 for mono for recording under critical light conditions.

**Drone ready** – Easy integration into drones with AOS Drone Kit MAP2 (order separately)

**Full package** – L-Blast 1000 comes with HDMI output and built in CFast card interface

**Software** – The Imaging Studio v4 SW suite leaves no

Frame rate vs resolution L-Blast 1000		
Resolution y	Resolution x	Max fps
1920	1080	1000
	900	1200
	720	1500
	512	2080
	256	4000
	128	7410
	16	29200

Resolution and fps may be set individually in the given speed ranges. Gain in fps by reducing the vertical resolution.

Recording time in sec vs memory size	
Memory size (GB)	L-Blast @ 1920 x 1080 @ 1000fps
4	2.0
8	4.0
16	8.0

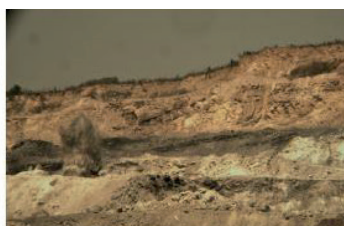
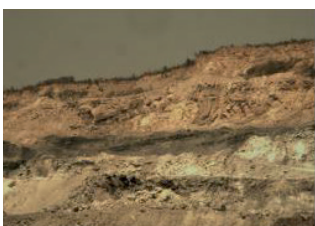
Optical specifications	
Sensor type	CMOS Sensor
Pixel size	10micron
Sensor format	4/3"
Light sensitivity	ISO 8000 (mono) ISO 6000 (color)
Exposure time	Global, from 1/framing speed down to 2 usec
Dynamic range	10 Bit
Gain	3 gain settings available by means of control software



L-BLAST mounted on drone and ready to fly



L-BLAST ground based, controlled by remote control recording taken with 1500 fps



# L-BLAST 1000 High-performance compact high-speed camera & MAP2 Drone kit

Camera and control features	
Buffer type	Circular buffer, parametrized by software
Trigger IN	Input for start/stop recording, falling edge, switch closure
Trigger modes	Pre- post recording, adjustable in steps of 1 frame
Lens mount	C-Mount, adapter for F-Mount optional
I/O tolerance	TTL compatible I/O, up to 24V tolerant
Power requirements	10...36 Volt / 25 – 30 Watts
Sync in / out	Sync in / out on camera
Auto exposure	Auto Exposure for brightness control
Auto-download	Auto download to PC after recording
Control SW	AOS Imaging Studio V4 included
Built in battery	Up to 30 min on battery, rechargeable
Data interface	
Data	Gigabit Ethernet
I/O	Solid 14 pin LEMO connector
Armed OUT	Armed out to indicate camera status ready for recording
Remote ON	For remote switch of camera (e.g. by drone control)
Set to recording	Set camera into recording
HDMI	HDMI Display interface for live and status information
Non-volatile memory	CFast card interface
Drone operation	Need AOS Drone Kit MAP2 part# DRNKIT-2
Physical specifications	
Size	w:75 x h:75 x l:124 mm (w: 2.95" x h: 2.95" x l: 4.88")
Weight	1.15 kg (2.5 lbs)
Storage temperature	-40 °C ... +70 °C non-condensing
Operating temperature	-10 °C to 45 °C
Extended temperature range	Extended operating temperature from -30 °C to 45 °C optional
Mounting	M6 Mounting threads on top bottom 1/4" for tripod mount
CE	CE tested

The drone kit contains all necessary parts to connect and control an L-BLAST camera on a UAV like the DJI matrice 600 PRO or Pixhawk based UAV platforms. The camera offers an HDMI output with freely definable camera status overlays, as well as an auto-exposure with adjustable exposure compensation. The CFast card slot allows saving recordings while flying and being ready for the next shot. The camera is equipped with a built-in battery and can also hooked up to the UAV or Gimbal battery system.



Drone KIT specifications	
MAP2 Module	CH1 – (button or spring-loaded switch) neutral, trigger activation
	CH2 – (3 stage switch spring load M-OFF-M) neutral, power ON, arm recording
Cable	Camera with P-TAP and 2,5 mm jack for input signals
	Micro USB to USB-A to power the AOS MAP2
	Micro HDMI to HDMI cable 0.3 m
Baseplate	Mounting plate for easy gimbal mounting