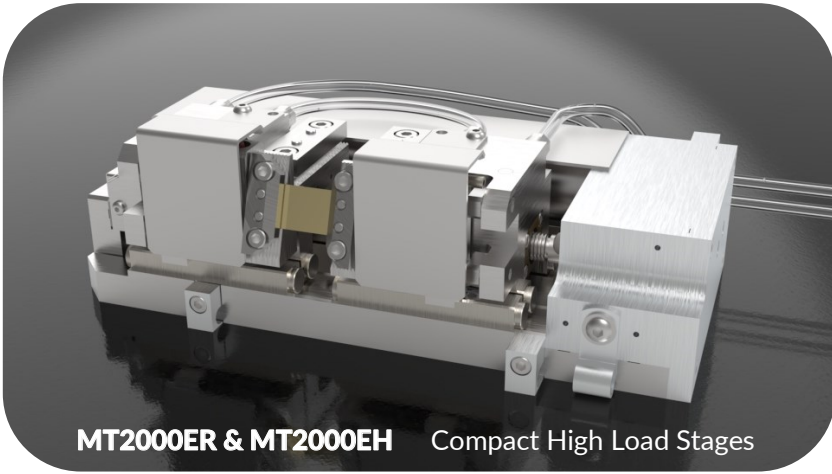


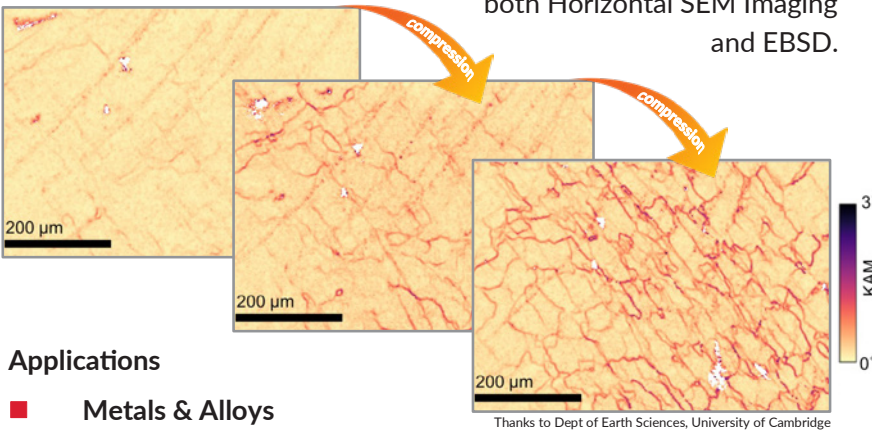
Microtest EBSD tensile and compression stages SEM - EBSD - In-situ heating



Features

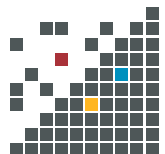
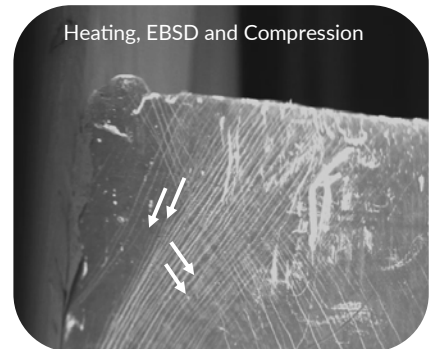
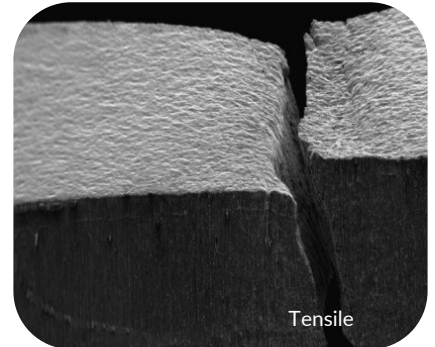
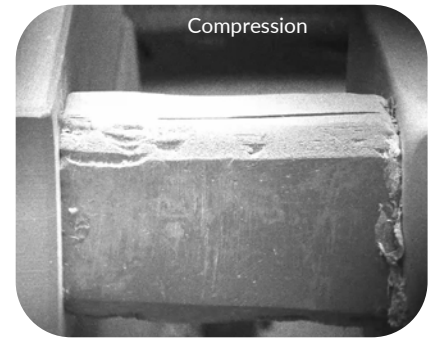
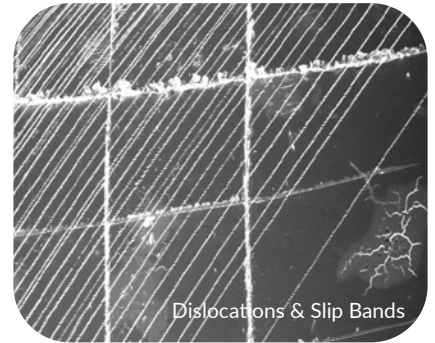
- Optimised EBSD 70° pre-tilt
- Loadcells from 200N to 5kN
- Heating up to 1000°C

Deben MICROTTEST stages are specifically designed to compliment a variety of imaging techniques and none more so than the new range of **High Load EBSD Stages** with optional heating up to 1000°C. Whether you wish to run room temperature experiments with the MT2000ER or the MT5000ER version, or achieve high temperature compression and tensile testing with the MT2000EH or MT5000EH, Deben have an EBSD stage for you. Fully optimised for both Horizontal SEM Imaging and EBSD.



Applications

- Metals & Alloys
- Polymers, Composites & Ceramics
- Fibres, Thin Films & Biomaterials

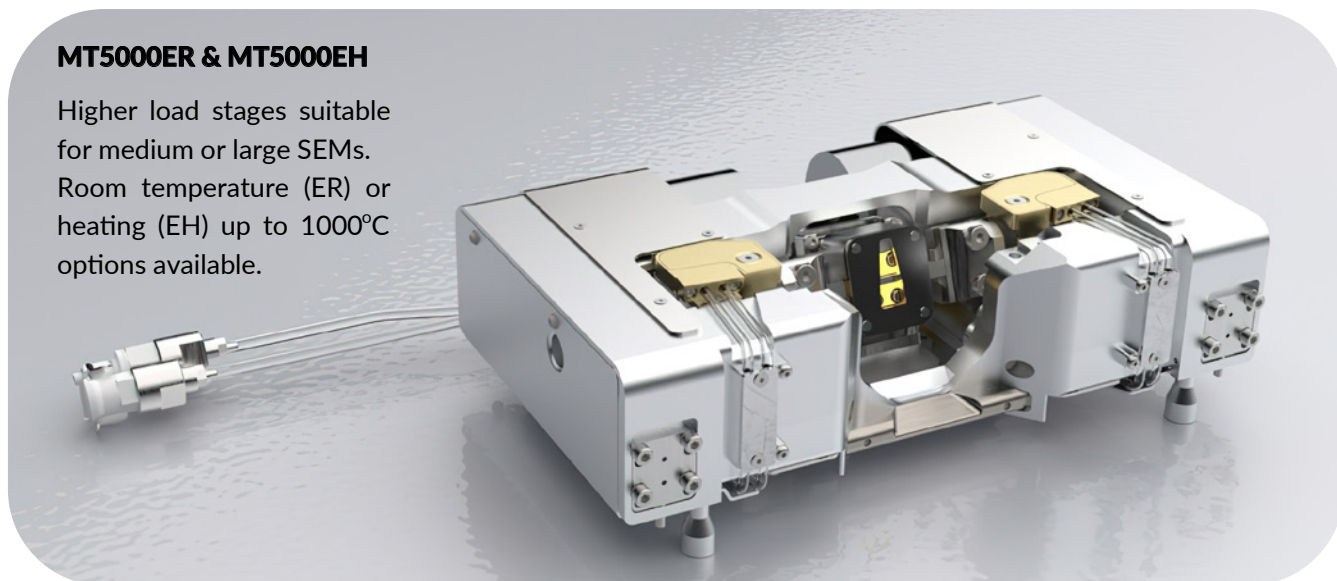


Microtest EBSD tensile and compression stages

SEM - EBSD - In-situ heating

MT5000ER & MT5000EH

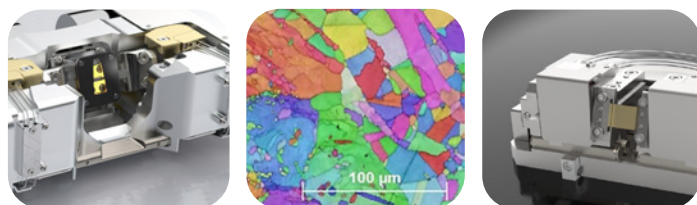
Higher load stages suitable for medium or large SEMs. Room temperature (ER) or heating (EH) up to 1000°C options available.



EBSD Tensile Stages

With up to 2kN and 5kN load cell capability and up to 1000°C temperature, new material characteristics can be tested with accuracy, stability and repeatability.

Full control of your stage and data is possible with the new Deben Test Suite software, designed for ease-of-use.



Why Deben?

- In-House Design Teams
- Global Distribution - Local Support
- Specialists in SEM Accessories

The identification of slip bands, strain marks, deformations, dislocations and crystalline defects are now possible within your SEM under varying test conditions.

In case any of the standard designs don't quite meet your needs, Deben's in-house Design and Manufacturing teams also provide for bespoke and custom made designs and alterations.

System Options

Stage	Max Load	Exchangeable Loadcells	Exchangeable Gearbox	Horizontal SEM Imaging	EBSD 70° Pre-Tilt	System Options			
						Heating	Compression Cage	Horizontal (3&4 Point) Bending	Loadcell Options
MT2000ER	2kN	✓	✓	✓	✓	Room Temperature	✓	✓	200N, 1kN, 2kN
MT2000EH	2kN	✓	✓	✓	✓	+600°C	✓	✓	200N, 1kN, 2kN
MT5000ER	5kN	✓	✓	✓	✓	Room Temperature	✓	✓	200N, 1kN, 5kN
MT5000EH	5kN	✓	✓	✓	✓	+1000°C	✓	✓	200N, 1kN, 5kN