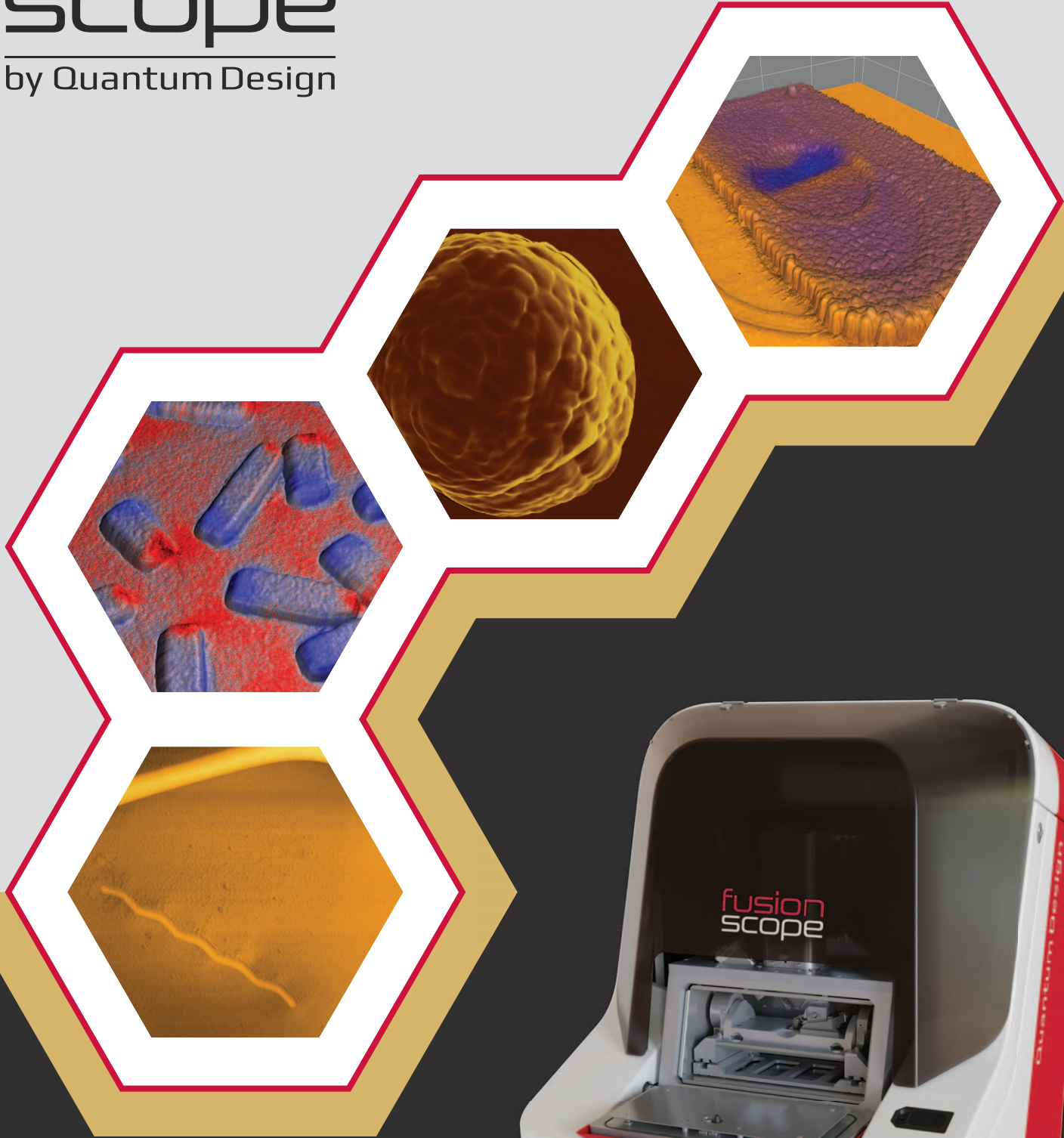


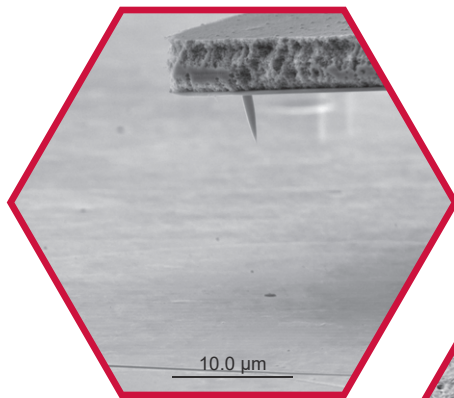
**fusion**  
**scope**<sup>®</sup>  
by Quantum Design



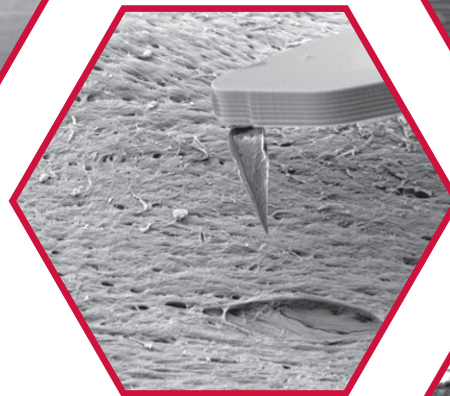
## The unique FusionScope Cantilever

**Technology** is based on self-sensing cantilevers that allow for high quality, low-noise detection of surface properties. The cantilevers are equipped with a full piezo-resistive Wheatstone bridge that provides all cantilever signals electrically without the need for optical alignment. This has direct advantages for the performance and ease of use, letting users record better images with less effort. The self-sensing technology also allows maximum access for the electron beam to the cantilever

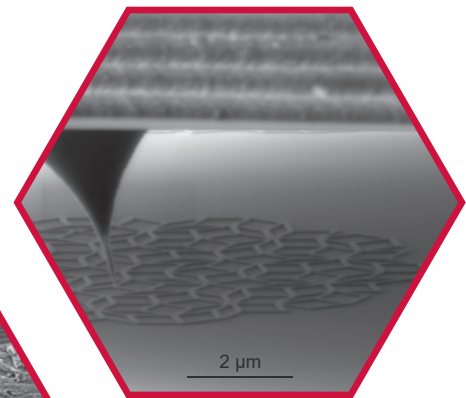
and sample region and enables a seamless combination of AFM and SEM. These self-sensing cantilevers are available with a broad variety of resonance frequencies, spring-constants and tip functionalities which provide the right cantilever for every application. For advanced measurement modes, specialized cantilever tips are used that enable, among other measurements: electrical conductivity, magnetization, surface potentials, temperature, and other sample features.



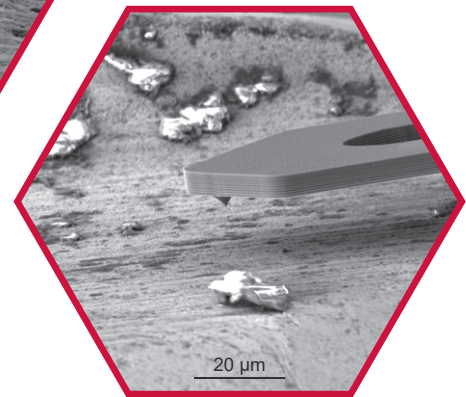
*Conductive AFM Tip*



*Diamond Tip*



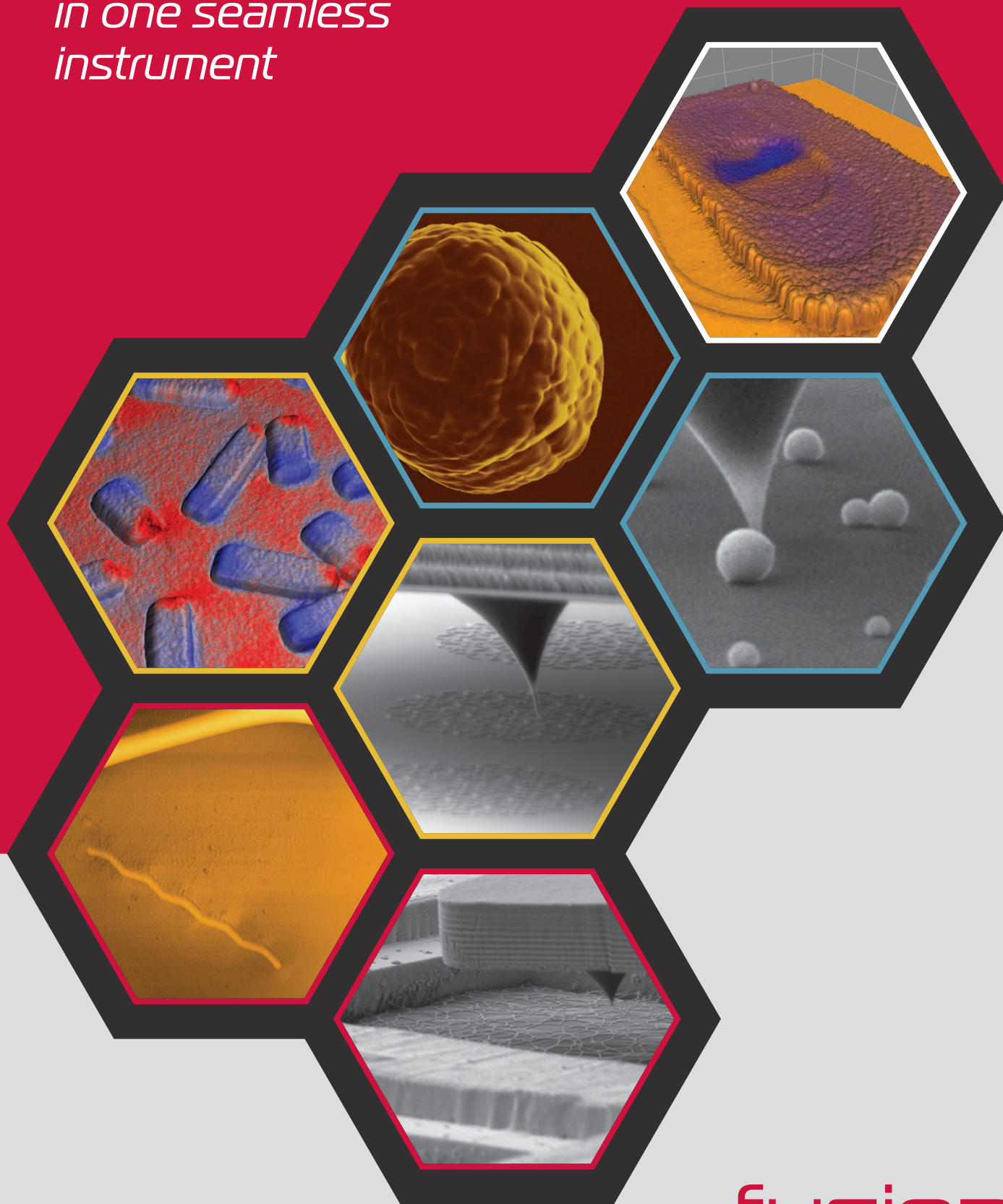
*MFM Tip*



*Silicon Tip*

Introduction	1 – 3
Applications:	4
• Nanostructures	5 – 8
• Life Sciences & Pharma	9 – 12
• Materials Characterization	13 – 15
• Quality Control & Failure Analysis	16 – 20

***AFM, SEM and EDS***  
*in one seamless*  
*instrument*



**fusion**  
**scope<sup>®</sup>**

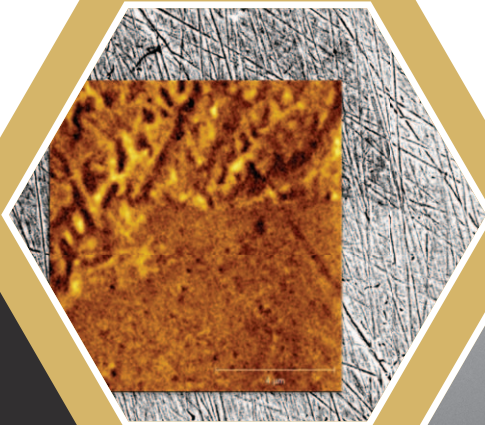
**FusionScope®** is a correlative microscopy platform designed from the ground up to add the benefits of SEM imaging to a wide range of AFM and EDS measurement techniques.

Featuring an innovative shared coordinate system to automatically align AFM, SEM, and EDS operations for measurements and sample positioning, within a single software interface you now can easily identify your area of interest, measure your sample, and combine your imaging data in real time.

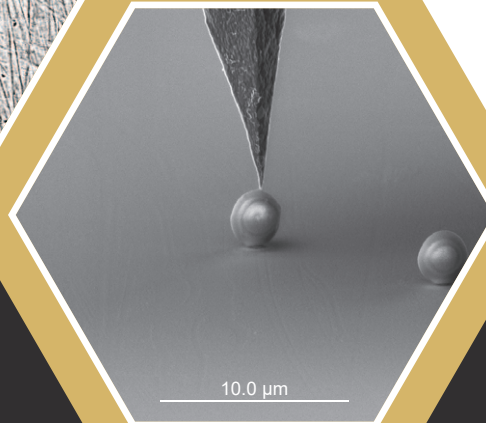
## **ONE platform...** **multiple applications**

Acquire detailed **Material Characterization** of your samples, including structural, elemental, mechanical, electrical, and magnetic properties. Carry out high-level **Quality Control** of manufactured parts or perform **Failure Analysis** on electrical components or semiconductor devices. Easily characterize **Nanostructures** such as nanowires, 2D-materials, and nanoparticles. FusionScope gives you full control to locate your area of interest, position your probe, and perform a wide range of measurements.

Correlated MFM & SEM data from duplex steel



AFM tip measuring a glass particle

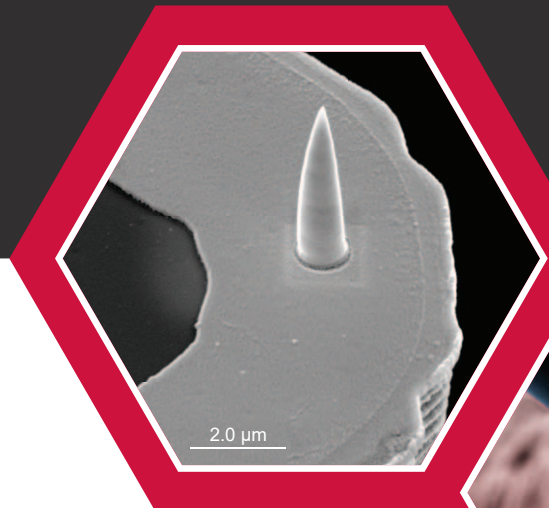
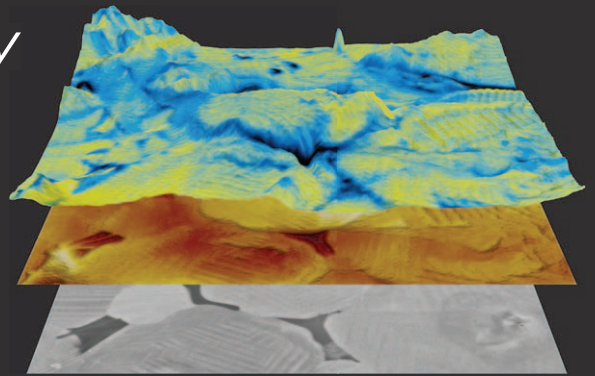


*"I was very impressed with the system in its current stage. It is a very compact, easy-to-use SEM and AFM correlative microscope platform. The AFM is very innovative, with the self-sensing Piezoresistive cantilever design not only eliminating the tedious work of laser spot alignment in traditional AFMs, but still being able to acquire sub-nanometer (atomic) resolution of data, as obtained in the high vacuum chamber."*

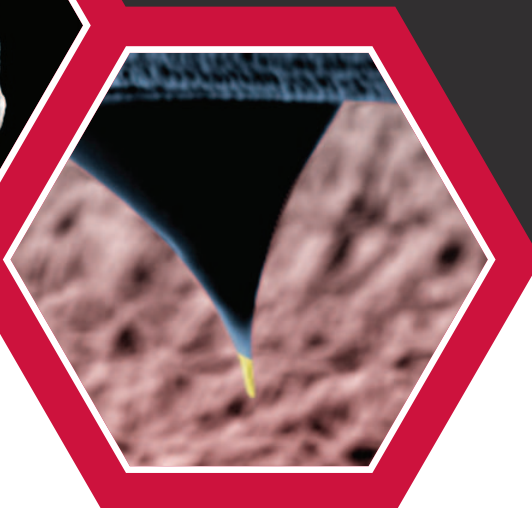
- Dr. Suguo Huo, Technical Manager Electron and Ion Beam Facility, London Centre for Nanotechnology

# TRUE correlative microscopy

Interactively overlay AFM imaging data onto SEM images while operating the microscope in real time. Create stunning 2D and 3D visualizations with nanoscale resolution.



Conductive C-AFM tip



Magnetic MFM tip

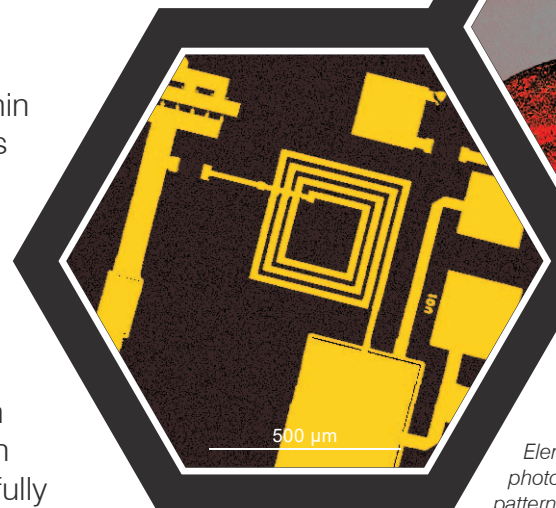
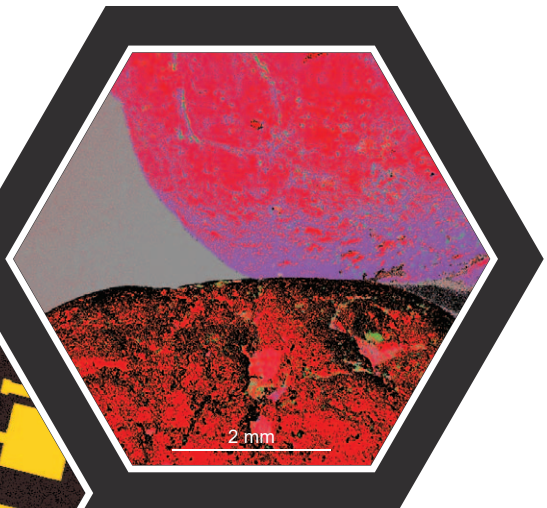
**POWERFUL,**  
*yet easy to use*  
**...the best of both worlds**

Easily switch between a sub-nanometer resolution AFM and SEM imaging to extract your desired data. FusionScope is capable of most standard AFM measurement modes, including contact, dynamic, and the measuring of mechanical properties.

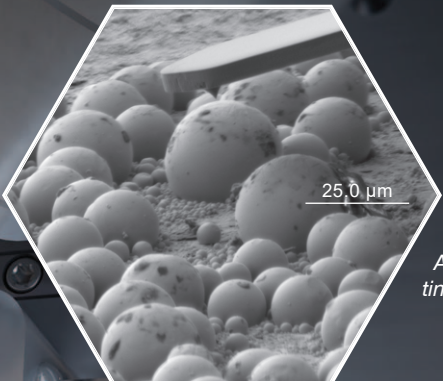
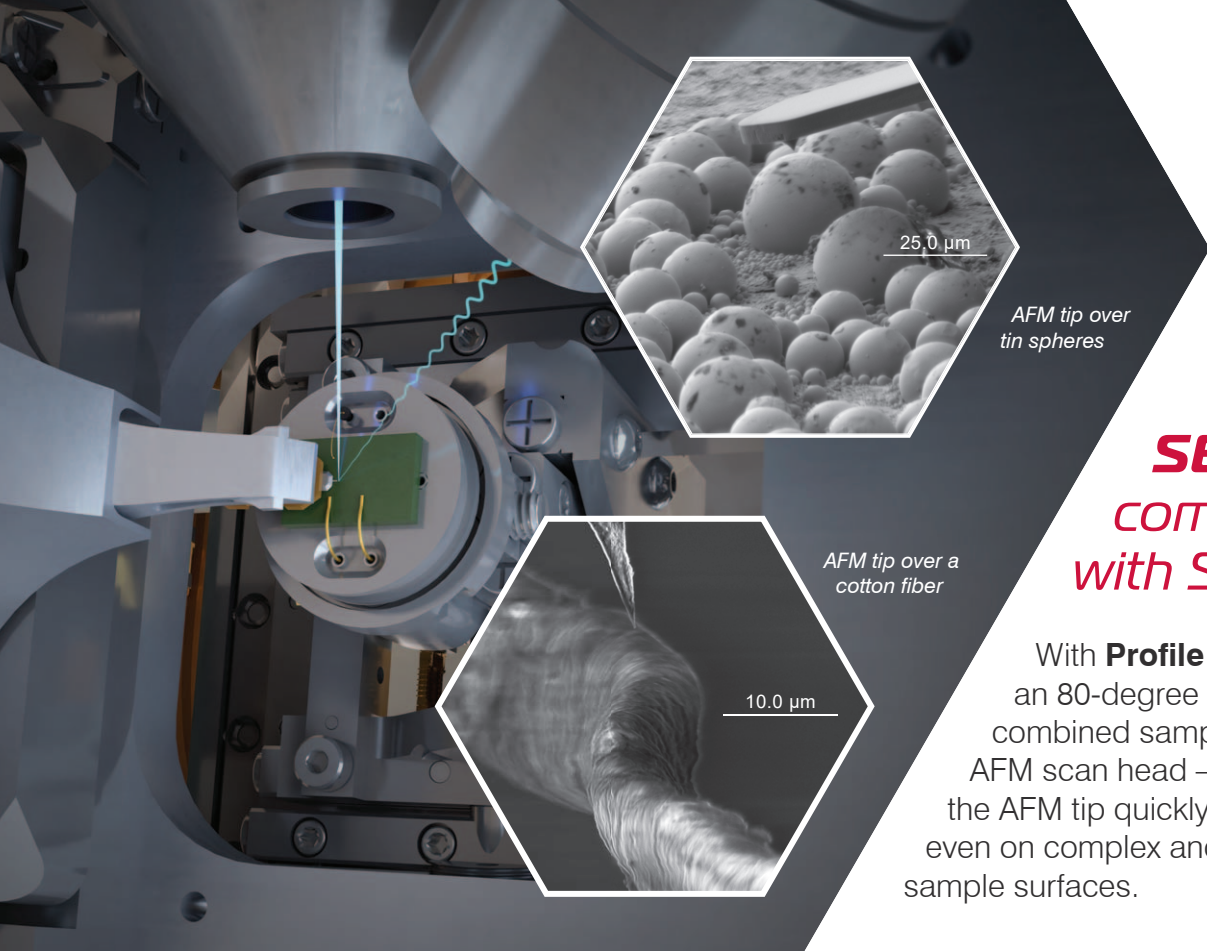
Interchangeable cantilevers provide advanced measurement modes within the same software interface, such as Conductive AFM (C-AFM) and Magnetic Force Microscopy (MFM).

Energy-dispersive X-ray spectroscopy (EDS) is an analysis method used for elemental characterization and is offered as an option with the FusionScope. As with other measurement modes, EDS is fully integrated within the FusionScope and all functions are operated within the same software interface using the shared coordinate system.

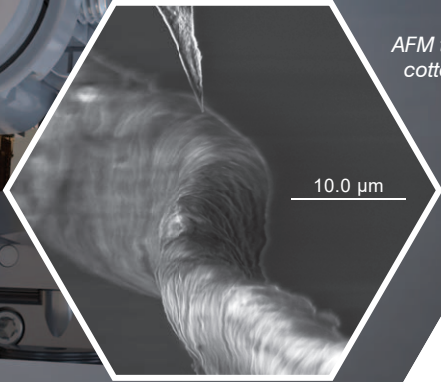
Elemental analysis of sedimentary rock samples showing variations in mineral composition.



Elemental analysis of a high-speed photodetector revealing the distribution pattern and fidelity of critical components.



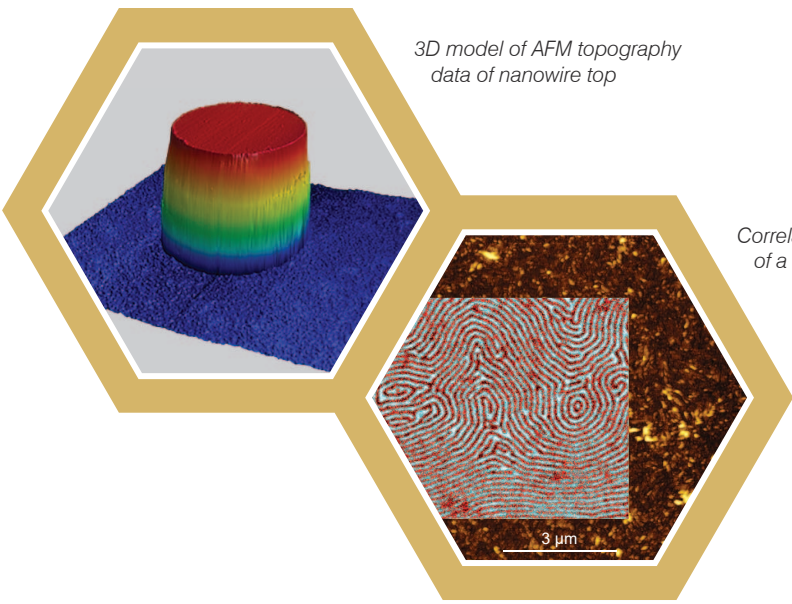
AFM tip over tin spheres



AFM tip over a cotton fiber

## **SEAMLESSLY** combine AFM with SEM-EDS

With **Profile View** – an 80-degree tilt of the combined sample stage and AFM scan head – you can position the AFM tip quickly and precisely, even on complex and challenging sample surfaces.



3D model of AFM topography data of nanowire top

Correlated AFM and MFM data of a multilayer Pt/Co/Ta sample.

## **INTUITIVE** correlative microscopy

Focus on your research and let FusionScope do the rest. **FusionScope's software** provides automation for most routine functions within an intuitive and customizable user interface. Intelligent data handling organizes all your AFM, EDS and SEM data for easy access in the future.





## Applications

By combining the complementary strengths of SEM and AFM, FusionScope opens the door to a whole world of new application possibilities.

Use the FusionScope for detailed **Material Characterization** of your samples and perform correlative analysis of their structural, mechanical, electrical, magnetic, and elemental properties on your region of interest.

Whether you are looking for high-level **Quality Control** of component parts or want to perform **Failure Analysis** on electrical components or semiconductor devices, FusionScope will help you to get the job done. Benefit from the fast and intuitive workflow to extract the data you are looking for.

Combining high-resolution SEM and state-of-the-art AFM you can easily characterize **Nanostructures** such as nanowires, 2D-materials, and nanoparticles. FusionScope gives you full control to locate the nanostructures and perform the measurements of your choice.

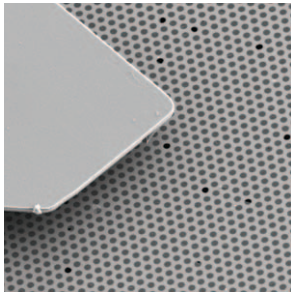
Using FusionScope in **Life Science & Pharma** applications allows you to acquire the nanoscale morphology of biological samples accurately and easily. Especially for hard-to-reach sample areas or very small features, FusionScope characterizes physical properties such as 3D topography, stiffness, and adhesion with the highest precision.



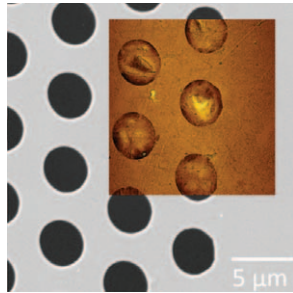
# Nanostructures

## Characterize 2D Materials using Atomic Force Microscopy

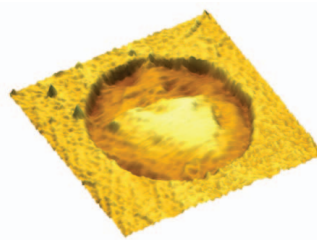
**Mode:** AFM Topography **Sample:** Freestanding Graphene



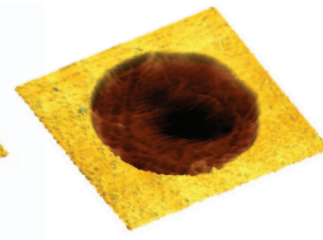
(Figure 1) SEM image of freestanding graphene membranes with cantilever.



(Figure 2) Correlative SEM & AFM image of freestanding graphene membranes.



(Figure 3) AFM topography image of freestanding graphene with low force load.



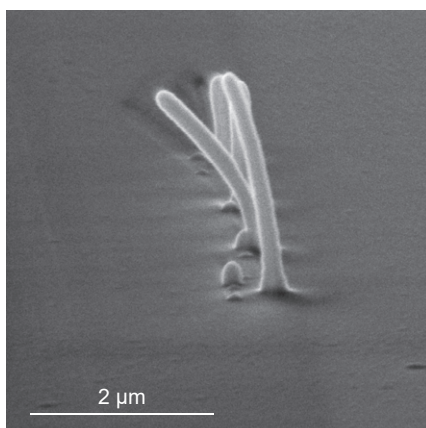
(Figure 4) AFM topography image of freestanding graphene with high force load.

Freestanding suspended membranes of two-dimensional materials (2D) are of great interest for many applications ranging from nanoelectromechanical sensors to optical devices. Much of their characterization relies on scanning probe microscopy techniques such as atomic force microscopy (AFM). Unlike rigid samples, the suspended atomically thin 2D membranes are flexible and do not remain

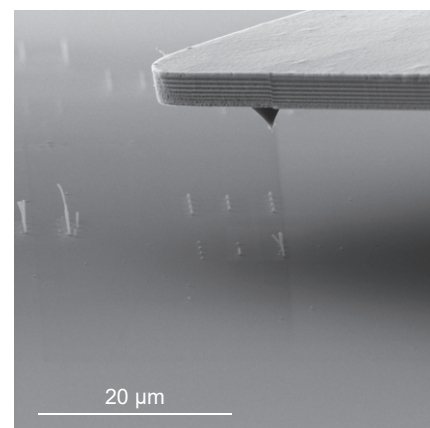
mechanically undisturbed during AFM measurements, which can lead to a misinterpretation of actual membrane topography and nanomechanical properties. FusionScope can circumvent these shortcomings by visualizing the membrane deformation during the AFM analysis, which leads to a better understanding of the acquired AFM data.

## Mechanical Properties of 3D Nanostructures

**Modes:** SEM, Force-Distance-Curves **Sample:** 3D-Printed Nanopillars



(Figure 1) SEM close-up of 3D nanopillars fabricated by FEBID.



(Figure 2) Positioning of AFM cantilever tip on top of individual 3D nanopillar.

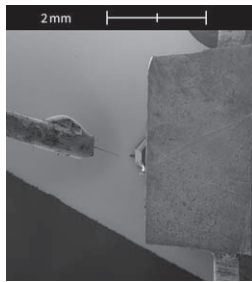
Characterizing the mechanical properties of 3D nanostructures, which have unique mechanical properties that can differ significantly from their bulk counterparts, is a crucial technique for advancements in nanotechnology, materials science, and various applied research fields.

Understanding these properties is essential for their integration into nanoscale devices and applications, including sensors, transistors, and other electronic components.

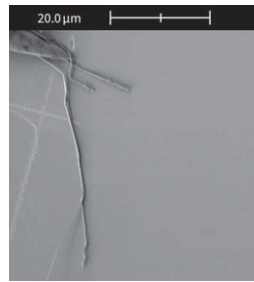


## Analyze Individual Nanowires using Profile View

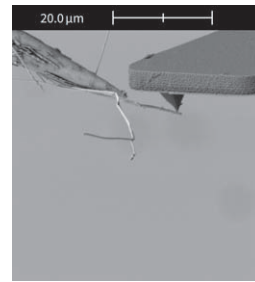
Mode: AFM Topography Sample: Nanowires



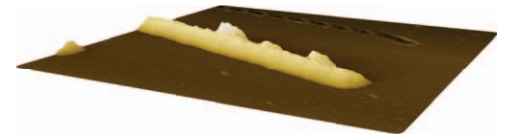
(Figure 1) Top view of AFM and nanowire on positioner.



(Figure 2) Nanowires on positioner.



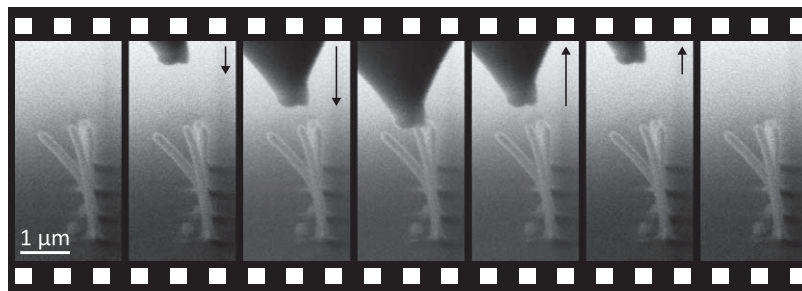
(Figure 3) Profile View of AFM cantilever approaching nanowire.



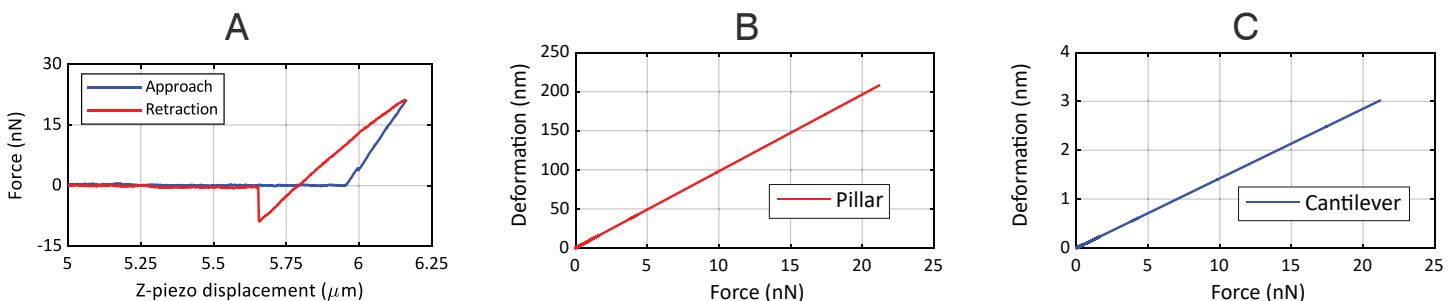
(Figure 4) 3D model of AFM topography data of nanowire.

The detailed characterization of individual nanowires using conventional AFM in combination with an optical microscope is always a challenge, as single nanowires cannot be easily identified and imaged with this setup. Using Profile View in FusionScope allows one to overcome these limitations. The visibility of the cantilever tip in combination with the high-resolution SEM enables the user to navigate the

cantilever precisely to the specific nanowire of interest. Once there, measurements such as topography and side-wall roughness, as well as mechanical and electrical properties, can then be obtained. This method gives the user a completely new and interactive way of performing nanowire measurements.



(Figure 3) Frames extracted from a time-lapse SEM video of the experiment showing the approach and retraction of the AFM cantilever.



(Figure 4) (a) Force-Distance curve acquired while simultaneously recording SEM data. (b) + (c) Modeled force-deformation curves for the pillar and the calibrated cantilever.

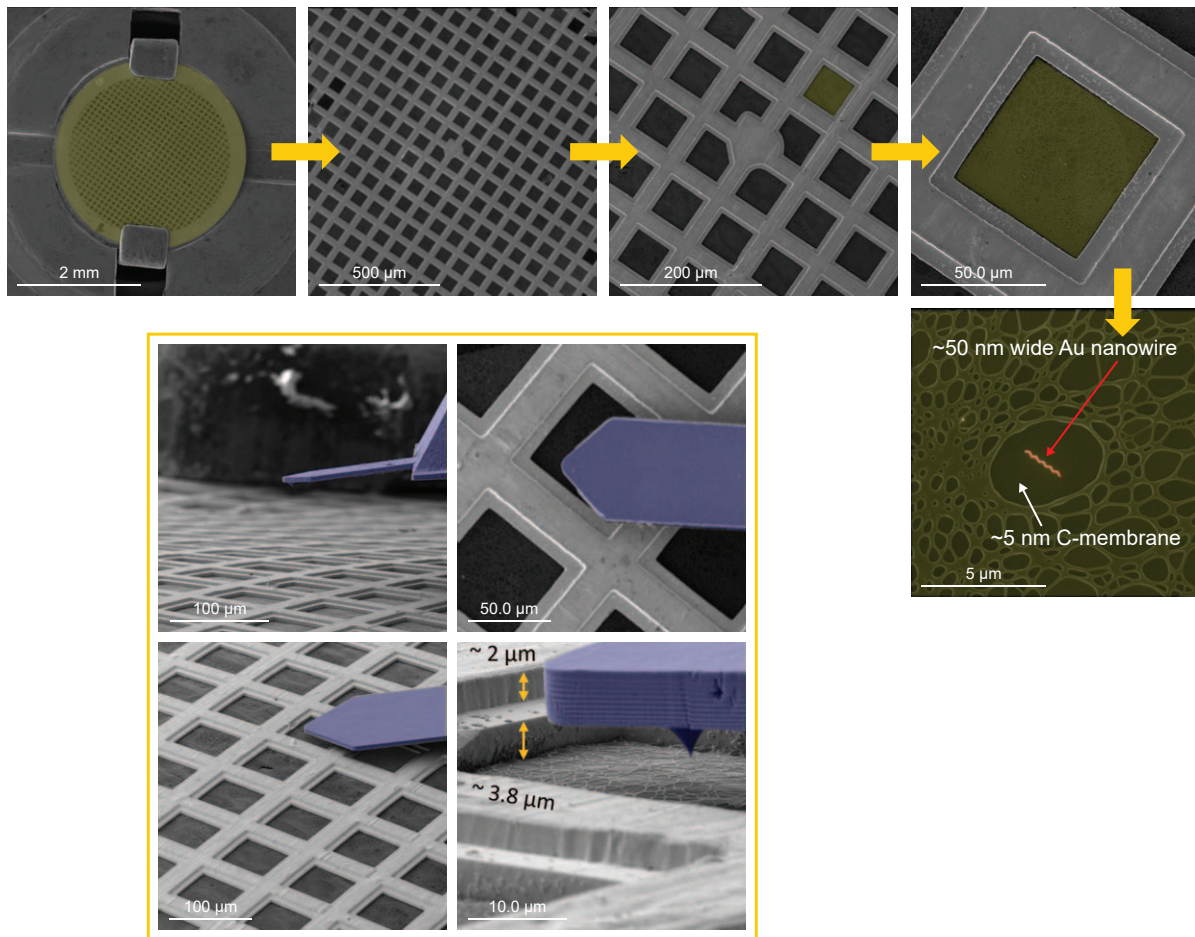
We analyzed the mechanical properties of 3D nanopillars ( $\sim 200$  nm diameter), fabricated using Focused Electron Beam-Induced Deposition (Figure 1). FusionScope's correlative AFM-SEM integration along with Profile View enable nanometer accuracy in aligning the AFM tip when the trunnion is tilted at  $80^\circ$  (Figure 2). The force between the cantilever's tip apex and the pillar is measured by the

calibrated deflection of the cantilever. As the cantilever moves downward, the pillar bends until the exerted force reaches a set point. The cantilever then retracts, allowing the pillar to return to its original shape (Figure 3). The mechanical response of the pillar and the cantilever can be modeled using the calibrated cantilever data and its calculated stiffness (Figure 4).

# Nanostructures

## Advanced Atomic Force Microscopy Analysis of Plasmonic Nanowires Post-TEM

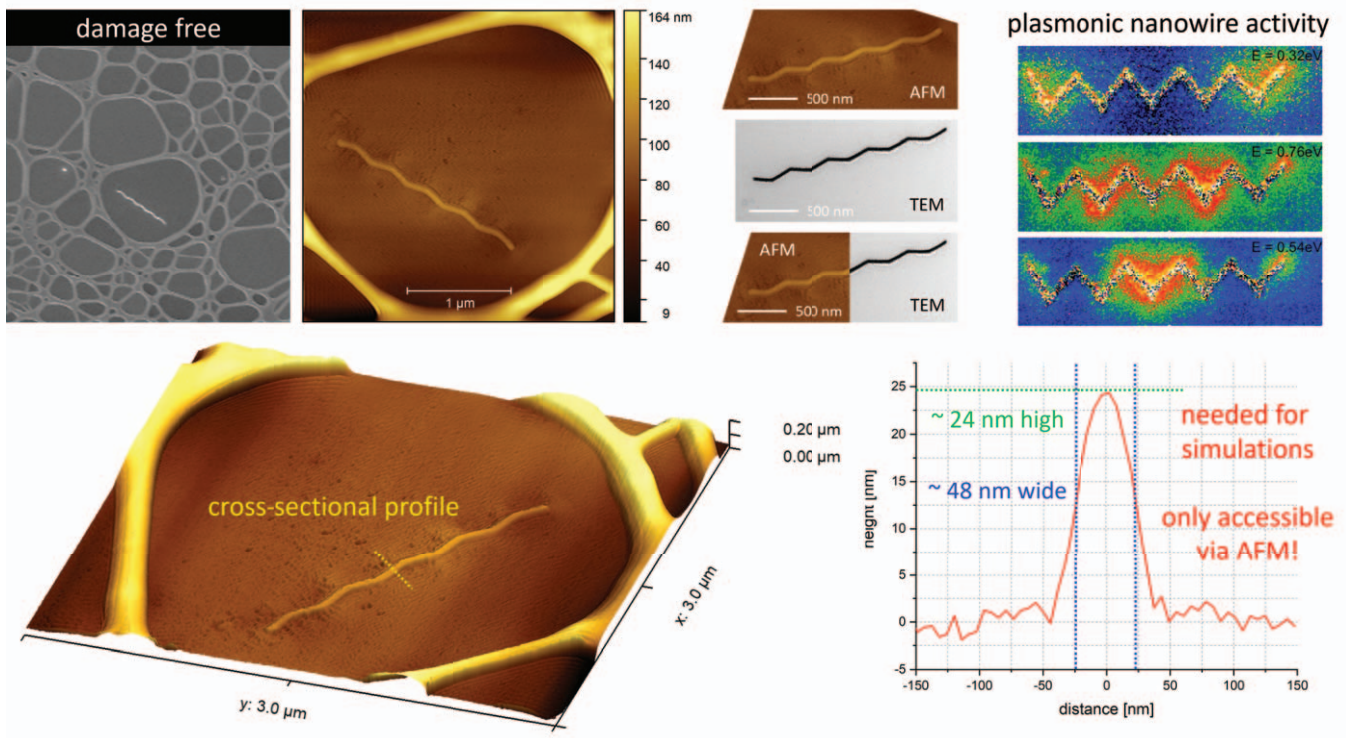
**Modes:** SEM, AFM Topography and Phase **Sample:** Plasmonic Nanowires



**(Figure 1)** Identification and positioning of the AFM tip on plasmonic nanostructures. Profile View allows for the precise localization of the sub-100 nm wide nanowire, enabling an accurate approach of the AFM tip.

Plasmonic nanostructures exhibit unique optical properties that are determined by their shape, spatial orientation, and material composition. Precise control of nanostructure geometries is crucial for tuning their plasmonic response within various applications. Focused Electron Beam Induced Deposition (FEBID) is a promising technique for producing high-fidelity nanoscale architectures, offering high design flexibility and the creation of complex 3D nanostructures [i]. In this example, FEBID was employed for the direct-write fabrication of planar Au nanowires, which were plasmonically characterized using scanning transmission electron microscopy-based electron energy loss spectroscopy (STEM-EELS) mapping measurements. These findings were complemented by corresponding plasmon simulations, validating the experimental data [ii].

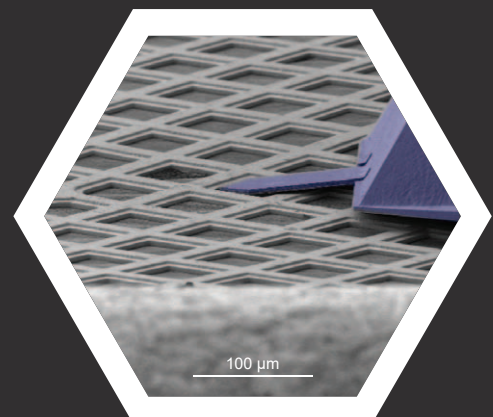
For the simulations it was crucial to access the real 3D morphology after STEM-EELS characterization. Since these measurements are typically performed on ultrathin membranes (sub-5 nm in this case), traditional AFMs are impractical due to difficulties in visually locating the nanostructures. FusionScope's Profile View offers a solution, as it allows for direct localization of the Au nanowires, enables precise tip positioning, and minimizes the risk of fracturing the ultrathin membranes during prolonged searches (Figure 1). The platform's excellent resolution provides reliable morphological data, as evidenced by a direct comparison between transmission electron microscopy (TEM) and AFM results (Figure 2). The obtained cross-sectional profile data serves as direct input for nanowire simulations of the very same structures, enabling direct correlation with STEM-EELS data for an iterative optimization of printing procedures.



**(Figure 2)** Damage-free morphological characterization of an Au nanowire produced on a sub-5 nm thin carbon membrane. A direct comparison between TEM and AFM confirmed the high resolution of the AFM, which is essential for reliable correlation. The obtained cross-sectional profile served as input for plasmonic simulations, facilitating further comparison with STEM-EELS measurements (top right). This enables improvements in the FEBID printing process for high-performance structures.

Overall, FusionScope proves to be the ideal tool for complementing TEM studies, with the potential to provide additional magnetic, electric, or mechanical information that is partially inaccessible through TEM alone.

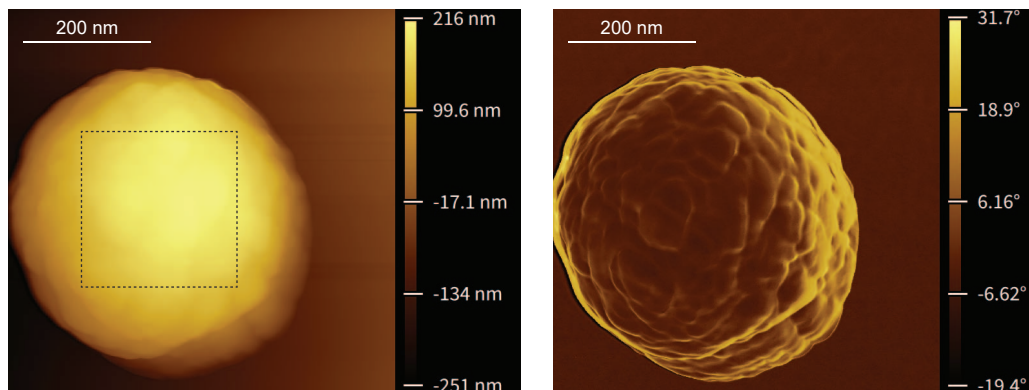
- i "A Review on Direct-Write Nanoprinting of Functional 3D Structures with Focused Electron Beams"; V. Reisecker, R. Winkler, H. Plank; *Advanced Functional Materials* 2024, in review.
- ii "Spectral Tuning of Plasmonic Activity in 3D Nanostructures via High-Precision Nano-Printing"; V. Reisecker, D. Kuhness, G. Haberfehnler, M. Brugger-Hatzl, R. Winkler, A. Weitzer, D. Loibner, M. Dienstleder, G. Kothleitner, H. Plank; *Advanced Functional Materials* 2023, 34 (7), 2310110.



FusionScope Profile View assists in positioning the AFM tip

## Characterize Sub-Wavelength Particles using Atomic Force Microscopy (AFM) and Energy Dispersive Spectroscopy (EDS) along with Profile View

**Modes:** SEM, AFM Topography and Phase, EDS **Sample:** Superparamagnetic Particles



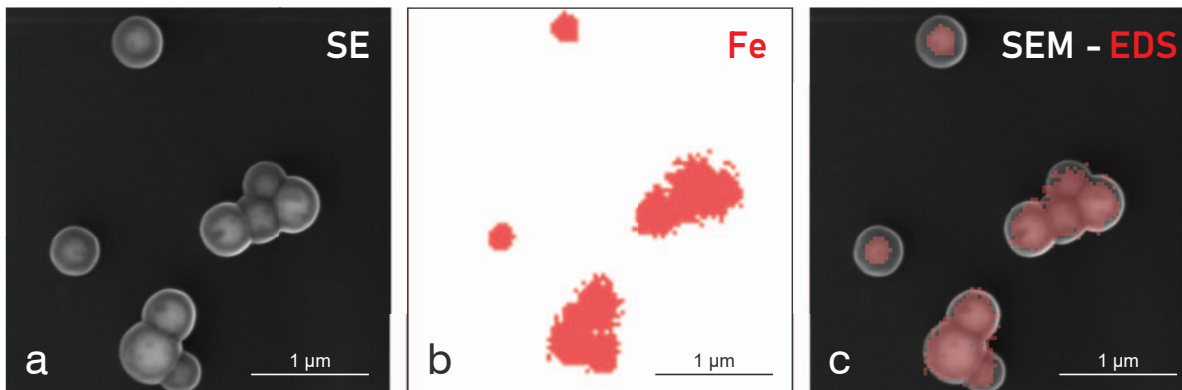
**(Figure 1)** Topography and phase images of a particle (600 x 600 nm with 600 x 600 pixels in the x- and y-axis). The surface roughness (RMS) shown by the dashed square (250 x 250 nm) on the image above is 25.01 nm.

*FusionScope hardware and software have been carefully designed to allow inexperienced users to feel comfortable while also allowing advanced users detailed, customizable user interfaces that offer the functionality they expect.*

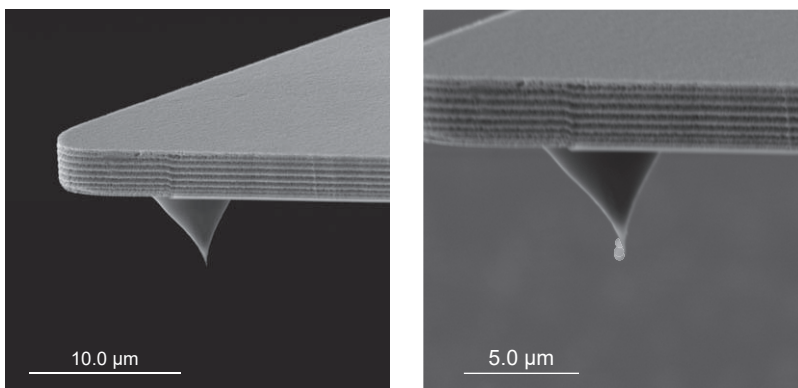


Nanoparticles (NPs) have broad applications in biological, medical, and pharmaceutical sciences, such as bio-separation, biosensing, diagnostics, and drug delivery. Because the functionality of NPs is highly dependent on their size, shape, surface, and material, the accurate characterization of particles is essential to their specific applications. And yet, the characterization of NPs can be challenging since different microscopy techniques are required to extract information, such as surface roughness and material composition. Furthermore, it is very challenging to measure sub-visible-wavelength sized particles accurately by optical methods.

For this example, we use carboxyl (COOH) group functionalized magnetic particles as a model system to demonstrate FusionScope's imaging capability. The FusionScope allows us to image the particle's surface with picometer resolution. The wide field of view of the SEM is employed to localize particles for AFM imaging. The topography and phase data from the AFM permit high-resolution inspection of the particle surfaces. We then use the correlated coordinate system and correlative in-situ measurement modes to capture relational AFM and SEM data. Higher-resolution AFM images from a single particle are shown in Figure 1. Finding particular particles of this size to take AFM data would be extremely difficult without FusionScope's correlated coordinate system and Profile View.



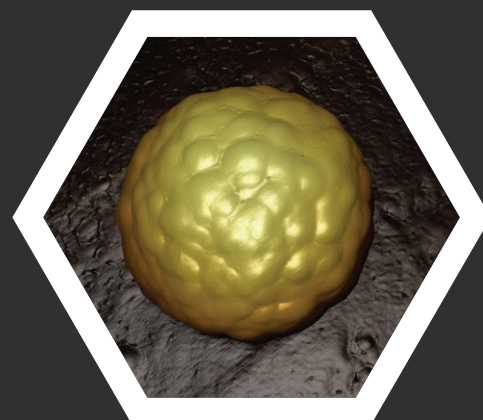
**(Figure 2)** SEM-EDS correlated measurements on the particles at 15 keV. While the SEM image provides high-resolution topographic information about the particles (a), X-ray analysis by EDS (b) reveals the iron core of the particles along with shell thickness (c). The field of view of the images is  $3\ \mu\text{m}$ , the SEM image is  $4000 \times 4000$  pixels, and the EDS image is  $200 \times 200$  pixels.



**(Figure 3)** Profile View in the FusionScope allows inspection of the tip status. The image on the left shows the status of a standard silicon tip; the image on the right reveals that some of the particles stuck to the tip during the measurement.

In addition, using EDS allows the identification of the iron core of the particles. The correlated SEM-EDS image gives insight into the size of the iron cores as well as the thickness of the organic polymer outer shells (Figure 2).

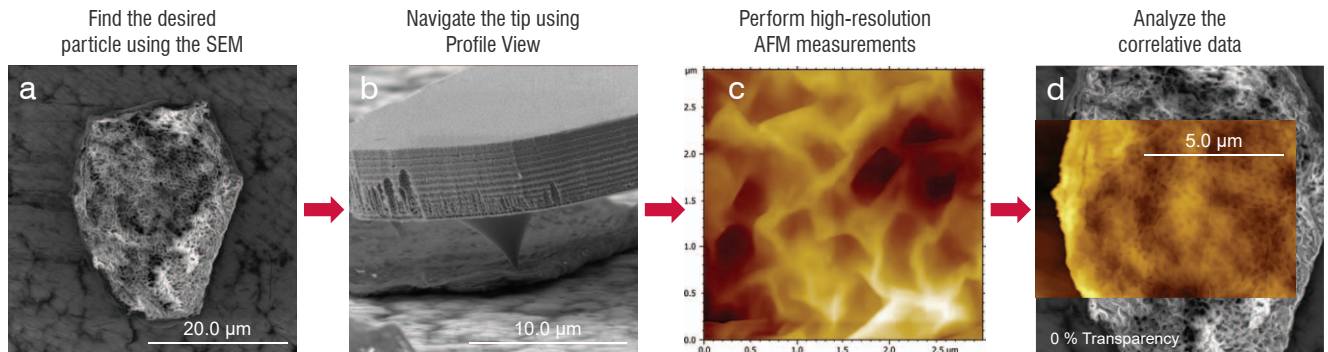
Worth noting is that AFM scans of finely-sized particles such as these usually would be challenging because they can easily stick to the AFM tip, reducing the image resolution or leading to image artifacts. Using Profile View in FusionScope allows easy inspection of the AFM tip before, after, and even during the measurements (Figure 3).



*3D Model AFM topography*

## Topographical and Mechanical Properties of Individual Vitamin C Particles

**Modes:** SEM, AFM Topography and Phase, Force-Distance-Curves **Sample:** Vitamin C Particles



**(Figure 1)** Workflow to obtain correlative AFM-SEM Data on Vitamin C particles using the FusionScope. (a) Identifying target Vitamin C particle. (b) Profile View of cantilever tip positioned on particle. (c) High-resolution AFM image of particle topography. (d) Correlated AFM/SEM image of particle.

Micro- and nano-sized particles have unique size-dependent properties crucial to pharmaceutical, electronics, and biomedical fields. Understanding and controlling these characteristics necessitate advanced techniques which often require jumping between multiple analysis tools. FusionScope enhances efficiency by seamlessly combining AFM and SEM, maximizing throughput with minimal resources.

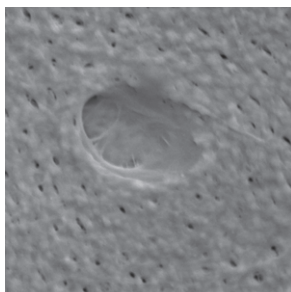
This is demonstrated in the study of topographical and mechanical properties of individual Vitamin C particles. Different particle sizes ranging from 100 μm down to 10 nm can be identified using the SEM (Figure 1a). FusionScope's correlated coordinate system allows for precise AFM tip positioning on target particles without the need for sample transfer (Figure 1b). SEM and AFM results can be directly correlated using the FusionScope software (Figures 1c and 1d).

## Discover Properties of Hard-To-Reach Sample Areas using Atomic Force Microscopy

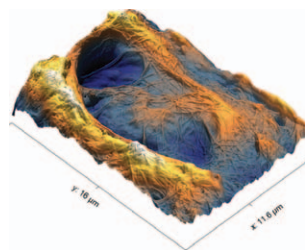
**Mode:** AFM Topography **Sample:** Bone



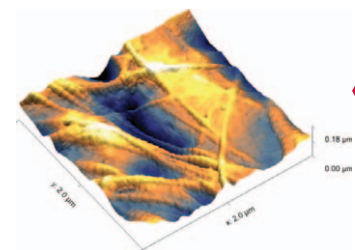
**(Figure 1)** SEM image of bone surface with cantilever.



**(Figure 2)** SEM image of lacunae structure.



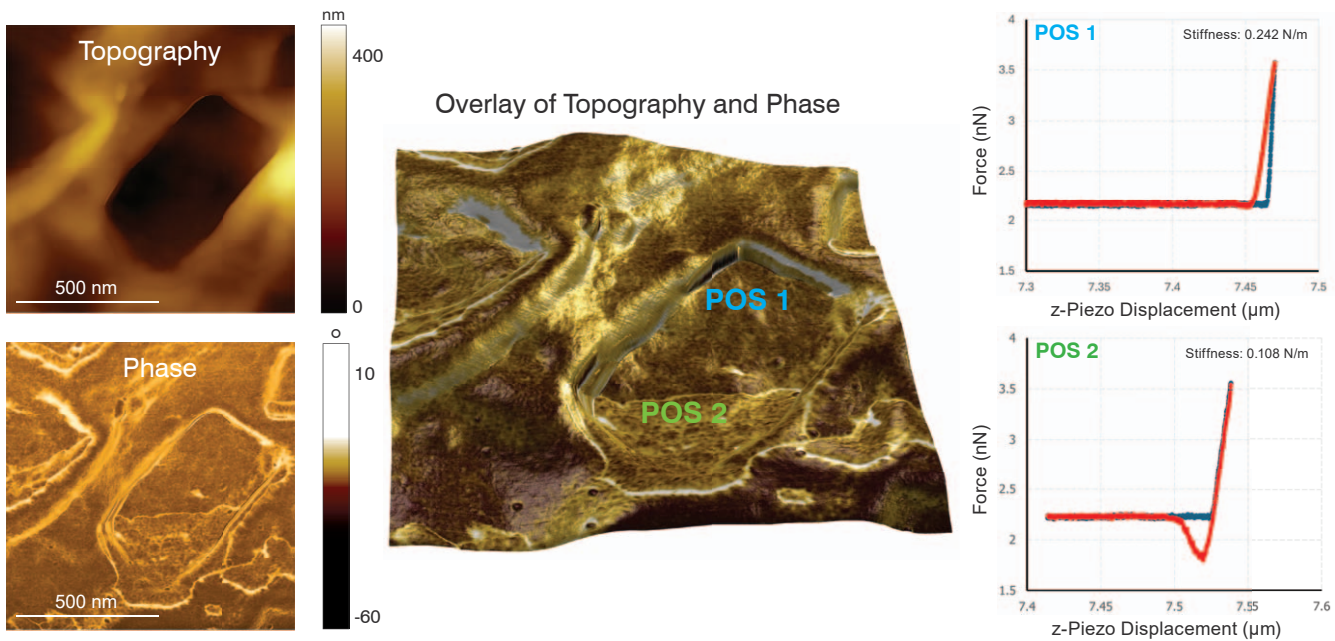
**(Figure 3)** 3D AFM topography image of lacunae structure.



**(Figure 3)** High-resolution AFM image of collagen fibers located inside the lacunae structure.

The correlative analysis of hard-to-reach sample areas is always a challenging task. One example is the analysis of bone tissue, especially the detailed measurements of lacunae and collagen fibers on the bone surface.

FusionScope allows a fast and easy identification and imaging of the lacunae structures. With the large field of view of the SEM the lacunae can be identified, and the cantilever positioned directly on the lacunae structures. Using the AFM, the 3D topography of the lacunae and the collagen fibers can be extracted with sub-nm resolution.



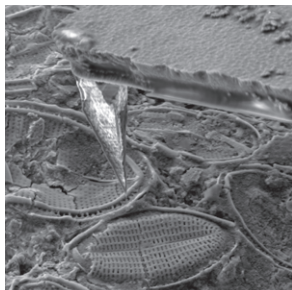
**(Figure 2)** (Left) High resolution AFM topography and phase images of a particle indicate a possible contamination. (Middle) Overlay of AFM topography and phase image revealing the two different materials in the crater structure. (Right) Force Distance Curves at Position 1 and Position 2 indicating different hardness and adhesion.

These measurements reveal particle roughness variations and provide 3D topography of samples. Furthermore, phase imaging and force-distance curves can be used to determine mechanical properties and identify surface contaminants. Figure 2 shows distinct phase contrast within the particle's crater structure, indicating contamination. The non-contaminated area exhibits greater hardness and less adhesion compared to the contaminated part.

FusionScope's Profile View ensures reliability, allowing users to observe cantilever movements during force-distance measurements, which helps avoid errors from sample deformation and ensures accurate mechanical property analysis.

## Easily Locate and Image Diatoms on a Seashell Surface

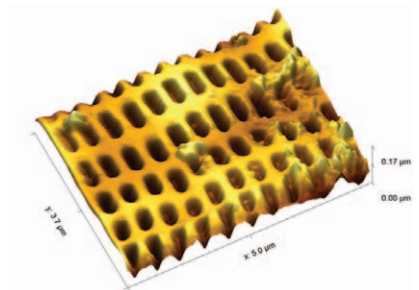
**Modes:** AFM Topography, SEM **Sample:** Seashell



**(Figure 1)** SEM image of seashell surface in profile view with cantilever tip.



**(Figure 2)** SEM image of diatom structure on seashell surface.



**(Figure 3)** 3D AFM topography image of diatom surface.

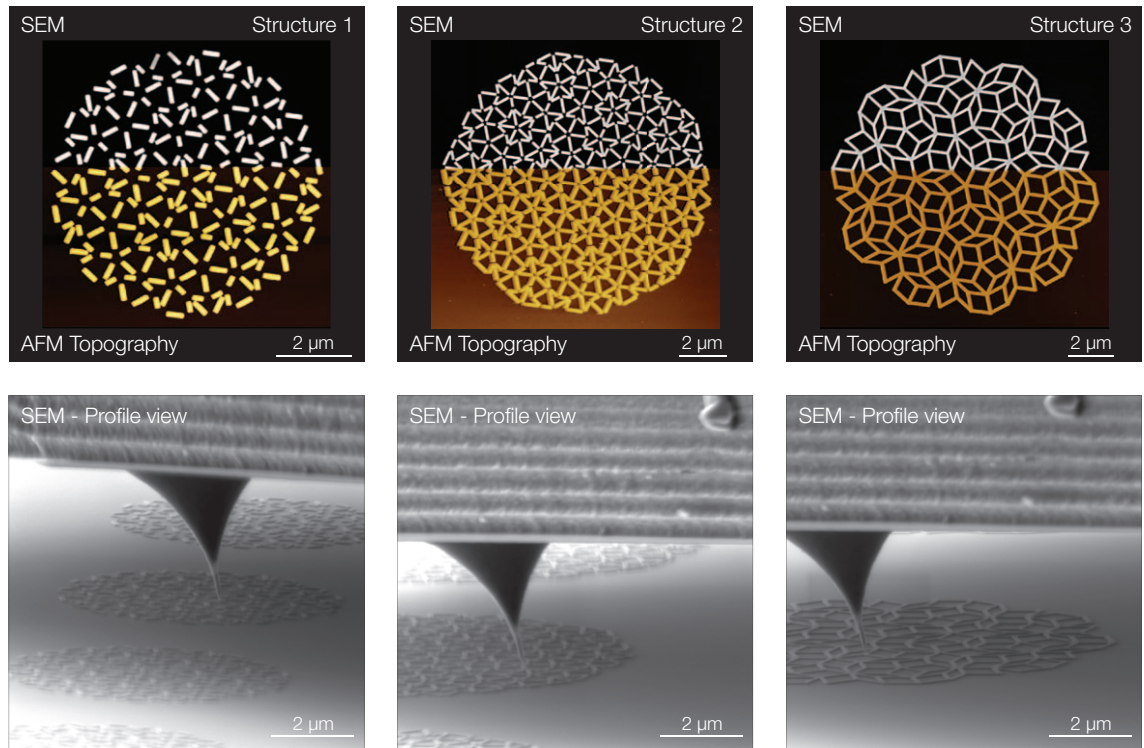
Diatoms are fascinating unicellular organisms that make up a significant amount of the Earth's biomass. In this application we used the power of correlative microscopy to locate diatoms on the surface of a seashell using the high-resolution

of the FusionScope SEM. With Profile view you can easily position the AFM cantilever tip on a diatom structure of your choice and perform a 3D topography analysis.

# Materials Characterization

## Study of Magnetic Properties of Artificial Spin Ice using Correlative Magnetic Force Microscopy (MFM) and Scanning Electron Microscopy (SEM)

**Modes:** SEM, AFM Topography and Phase, MFM **Sample:** Artificial Spin Ice



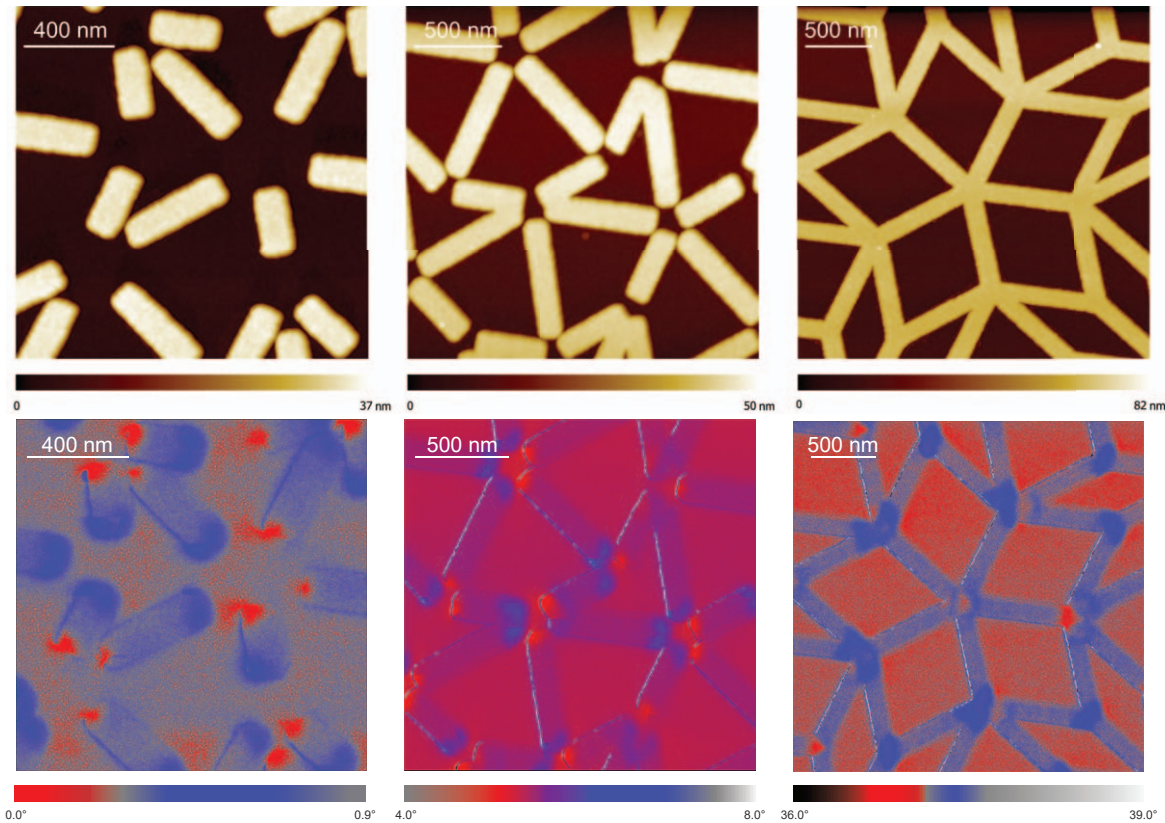
**(Figure 1)** Three different Penrose patterns made of  $\text{Ni}_{81}\text{Fe}_{19}$  nanorods are shown: Structure 1 - disconnected nanorods; Structure 2 - almost interconnected nanorods; Structure 3 - interconnected nanorods. (Top row) Correlation between SEM and AFM Topography of the three different structures. (Bottom row) SEM profile view of the cantilever tip engaged on the different nanorod structures.

Spin ice is a fascinating and unique state of matter within the field of condensed matter physics, characterized by its magnetic frustration and emergent phenomena. In spin ice materials, the magnetic moments, or "spins," are arranged in a manner analogous to the positions of hydrogen atoms in water ice, hence the name. This arrangement leads to a highly degenerate ground state and the emergence of exotic excitations that mimic magnetic monopoles – entities long theorized in physics but never observed in isolation. The study of spin ice not only provides insights into fundamental aspects of magnetism and statistical mechanics but also has implications for the development of new technologies, such as advanced magnetic storage systems and quantum computing.

A sample of patterned Permalloy ( $\text{Ni}_{81}\text{Fe}_{19}$ ) was used to demonstrate FusionScope's capability to provide correlative MFM and SEM analysis. Figure 1 shows the three different "Penrose patterns" that were analyzed. Such structures, where each nanorod is essentially a small ferromagnet, are potential candidates for ultra-high-density data storage devices. We fabricated high-aspect ratio magnetic tips using a 3D nano-printing technology. These 3D nano-printed tips are typically made of Fe or FeCo and allow tip radii of only 10 nm.



*Spin ice is a fascinating and unique state of matter within the field of condensed matter physics, characterized by its magnetic frustration and emergent phenomena. The study of spin ice not only provides insights into fundamental aspects of magnetism and statistical mechanics but also has implications for the development of new technologies, such as advanced magnetic storage systems and quantum computing.*



**(Figure 2)** (Top row) High-resolution AFM Topography of three different magnetic nanostructures. (Bottom row) MFM phase signal showing the different distributions of the stray magnetic field above the sample for each pattern. The used tip lift height is 40 nm.

Using FusionScope's unified coordinate system in combination with Profile View, the cantilever can be easily navigated to the region of interest. This allows precise positioning of the magnetic cantilever tip on the different magnetic nanostructures (Figure 1, bottom row). Correlative SEM and AFM topography can be performed and directly correlated using the FusionScope software interface (Figure 1, top row).

To study the artificial spin ice, we used dual scan MFM in lift mode with a typical lift height of 40 nm. As can be seen in Figure 2 (top row) the artificial spin ice is composed of structures with typical heights of 35 to 50 nm (depending on the specific structure). In all three different structures

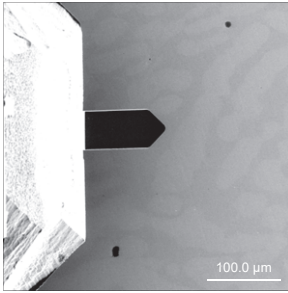
the measured intensity of the magnetic field changes at the vertices of the separated or interconnected nanorods (Figure 2, bottom row). These vertices with high intensities can act as hotspots where ferromagnetic switching of the nanorods can occur under an applied external magnetic field.

In summary, FusionScope provides an easy-to-use platform for correlative SEM and MFM analysis of magnetic nanostructures. Combining the benefits of a joint coordinate system, easy tip positioning via Profile View, and high-resolution MFM data with reduced phase artifacts enables new ways of characterizing your magnetic samples.

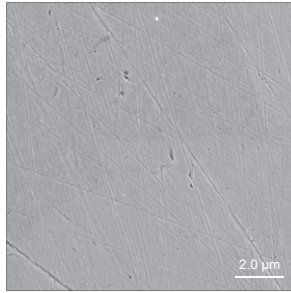
# Materials Characterization

## Characterize Magnetic Phase Structures using Magnetic Force Microscopy

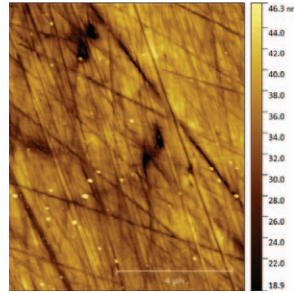
**Mode:** AFM Topography, MFM **Sample:** Duplex Steel



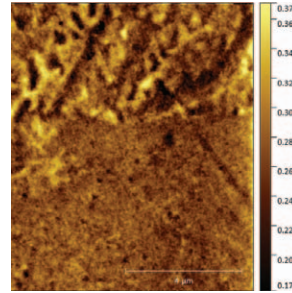
(Figure 1) Overview SEM image of duplex steel with cantilever.



(Figure 2) SEM image of grain boundary on duplex steel.



(Figure 3) AFM topography image at duplex steel grain boundary.



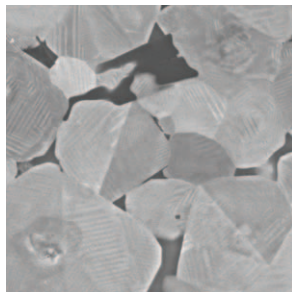
(Figure 4) MFM image at duplex steel grain boundary showing ferromagnetic phase structure.

Duplex is a family of stainless steel grades that contain a mixture of austenitic and ferritic phases that provide higher mechanical strength and ductility compared to standard steel grades. In-situ Magnetic Force Microscopy (MFM) enables the detailed analysis of the magnetic properties of different types of duplex steel samples.

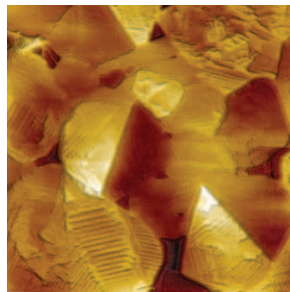
With the FusionScope the different phases of the steel surfaces can be visualized, and the cantilever is easily positioned at the grain boundary of two distinct phases. Using a magnetic cantilever tip the magnetic properties can be analyzed, and the ferromagnetic sub domains can be imaged with high resolution.

## Evaluate Barriers in Materials using Electrostatic Force Microscopy

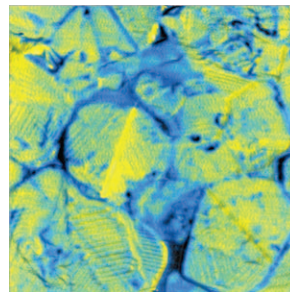
**Mode:** SEM, AFM Topography, EFM **Sample:** BaTiO<sub>3</sub>



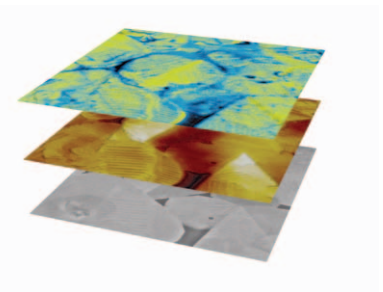
(Figure 1) SEM image of BaTiO<sub>3</sub> sample.



(Figure 2) AFM topography image of BaTiO<sub>3</sub> sample.



(Figure 3) EFM phase image of BaTiO<sub>3</sub> sample (+1.5V).



(Figure 4) Correlative 3D overlay of SEM, topography, and EFM signal.

Barium titanate (BaTiO<sub>3</sub>) is a ceramic material exhibiting interesting optical, electrical, and thermal properties shifting it to the center of scientific attention. More recently BaTiO<sub>3</sub> is also gaining importance for engineering applications. Ferroelectric BaTiO<sub>3</sub> is a non-linear positive-temperature-coefficient (PTC) material and is used in resistors. Polycrystalline doped barium titanate exhibits a wide range of electrical resistance depending on the temperature which is employed in sensors and actuators.

The macroscopic electronic properties of polycrystalline BaTiO<sub>3</sub> ceramics are governed by potential barriers forming

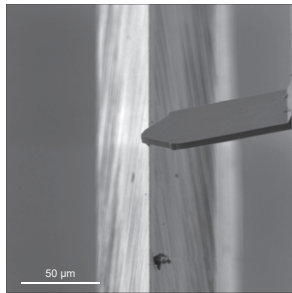
between single grains. To reach a better understanding of the overall resistance of barium titanate it is essential to be able to characterize the potential differences in the crystalline material at the nanoscale.

This characterization can be done with Electrostatic Force Microscopy (EFM). It is widely used in electronics development to map electronic characteristics of complex, sub-micron electrical materials. FusionScope enables the possibility for in-situ EFM analysis. The high resolution of the SEM can be used to easily identify grain boundaries and perform the EFM analysis directly at the region of interest.

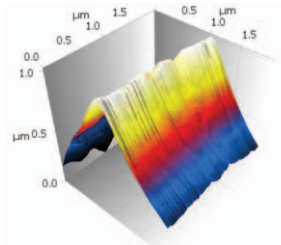
# Quality Control & Failure Analysis

## Analyze Materials with Difficult Geometries using Atomic Force Microscopy

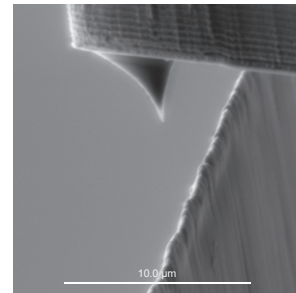
**Modes:** SEM, AFM Topography **Sample:** Razor Blade



(Figure 1) SEM image of AFM tip over blade edge.



(Figure 2) AFM data image of razor blade edge radius.



(Figure 3) AFM tip scanning blade edge.

Typically, in atomic force microscopy, measurements of very pointed sample geometries are difficult. This is due to the convolution of the geometry of the tip with the topography of the sample surface. Also a challenge is the correct and reliable positioning of the tip over the sample. Profile View is used here to position the sample in the best possible way and to monitor the AFM measurement in real time.

A commercially available razor blade was installed in the sample holder with the aim of imaging the surface of the blade with the AFM and, in particular, determining the

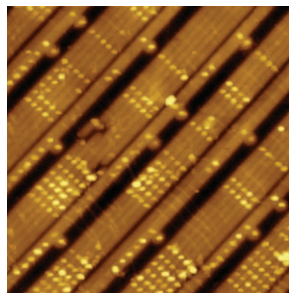
radius of the blade edge. The measurement comprises several steps: the coarse positioning, the fine positioning, the approach of the tip, and finally the measurement of the topography. With the help of the fine positioning made possible by the SEM, different areas on the razor blade can be quickly selected and measured. Different material properties, such as coatings applied to the razor blade, also can be compared. An important parameter of blade quality is the radius of the razor blade, as well as the roughness of the surface.

## Analyze Electronic Components or Semiconductor Devices using Atomic Force Microscopy

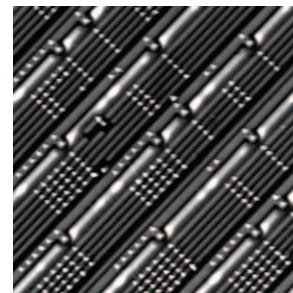
**Modes:** AFM Topography, SEM **Sample:** CPU Chip



(Figure 1) SEM image of CPU chip with cantilever tip positioned on the region of interest.



(Figure 2) AFM image of specific area of transistor structures.



(Figure 3) SEM image of specific area of transistor structures.

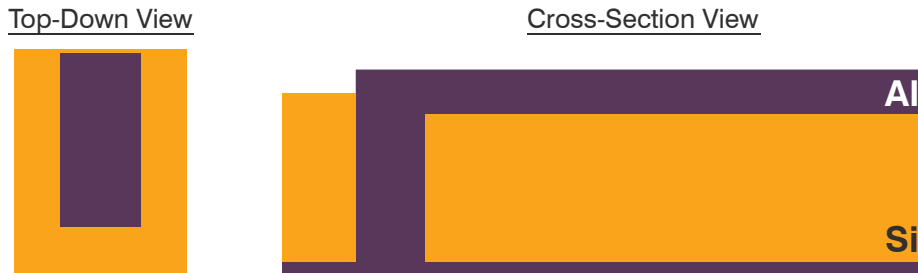
Detailed location and analysis of nanometer-sized structures is a challenging and time-consuming task for all AFM operators. The size reduction in recent generations of transistors creates especially high demands on quality control and failure analysis. With FusionScope and Profile

View you can easily navigate the cantilever tip to the region of interest and perform high resolution AFM analysis of your sample. Measure the 3D topography with sub-nanometer resolution or extract additional information using conductive AFM.

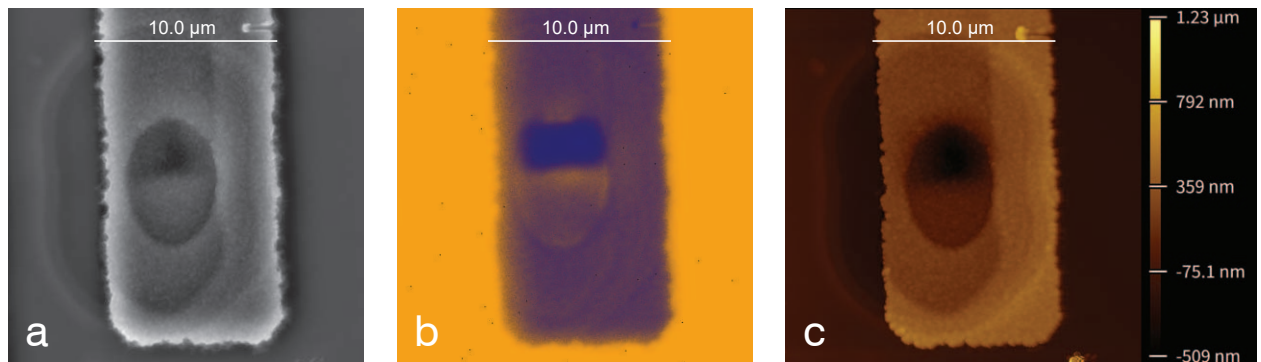
# Quality Control & Failure Analysis

## Analyze a Complex Circuit Failure in Interlayer Circuit Structures using Atomic Force Microscopy (AFM) and Energy Dispersive Spectroscopy (EDS)

**Modes:** SEM, AFM Topography, EDS **Sample:** Interlayer VIA Circuit



(Figure 1) Top-down and cross-section views of the VIA circuit.



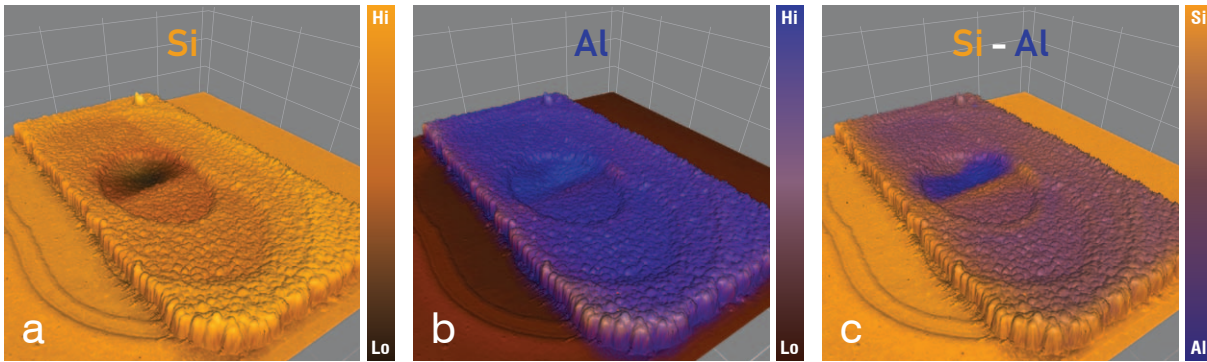
(Figure 2) SEM (a), EDS X-ray (b), and AFM-Topography (c) images of a failure spot. EDS analysis was able to distinguish the Al line and the Si substrate as well as the position of the Al VIA – the dense, purple-colored region at the upper section of the oval feature (b). Additionally, there are slightly brighter yellow regions (equal to higher concentration) around the VIA, indicating a greater Si concentration. This is expected since the Al line is thinner over the VIA (see AFM image). Consistently, a lesser amount of Si signal is detected from the VIA since the top material is Al in this region (b).

Failure analysis and quality control procedures are very important for determining errors in the manufacturing process and increasing yields of manufactured devices. This can be especially challenging in interlayer circuits, such as a VIA (Vertical Interconnect Access) circuit (Figure 1). In these cases, a three-part analysis using the correlated capabilities of SEM, AFM and EDS in the FusionScope can greatly increase knowledge about samples and help in their improved manufacturing.

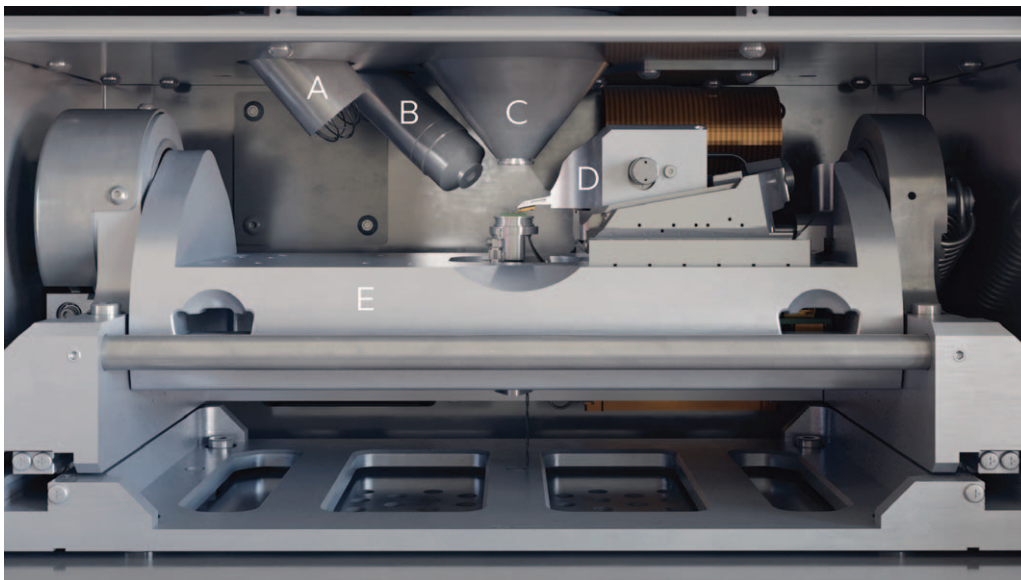
First, the SEM is used to map the large area and identify potential spots of failure by providing detailed imaging of the overlay error that occurs when layers of material are misaligned, decreasing the contact area and potentially

lowering the device performance or in some cases leading to failure. The SEM image also provides high-resolution lateral information on the X and Y axes, facilitating the precise measurement of overlay accuracy (Figure 2a).

FusionScope's unified coordinate system, along with the coordinates provided by the SEM, allow AFM measurements to be easily gained by executing an automated scan command. The complementary vertical surface information provided by the AFM data reveals the topographic details of the surface along the Z axis, which are not clear in the SEM image. In this example, the AFM reveals that the circuit line is thinned over the VIA, potentially contributing to an impaired electrical connection (Figure 2c).



**(Figure 3)** Correlation of 3D topography view with EDS X-ray data. The colors represent the material concentration instead of the height. On the left-hand side (a), only the Si channel is superimposed onto the 3D image; in the middle (b), only the Al channel is superimposed; and on the right-hand side (c), both Si and Al channels are superimposed onto a 3D representation of the AFM topography image. In this way it becomes clear that the Al portion of the VIA is located in a thinned area which most likely leads to poor or faulty performance.



**(Figure 4)** 3D rendering depicting the interior of the FusionScope chamber. (a) E-T detector, (b) EDS, (c) SEM Column, (d) AFM, (e) Trunnion tilt stage.

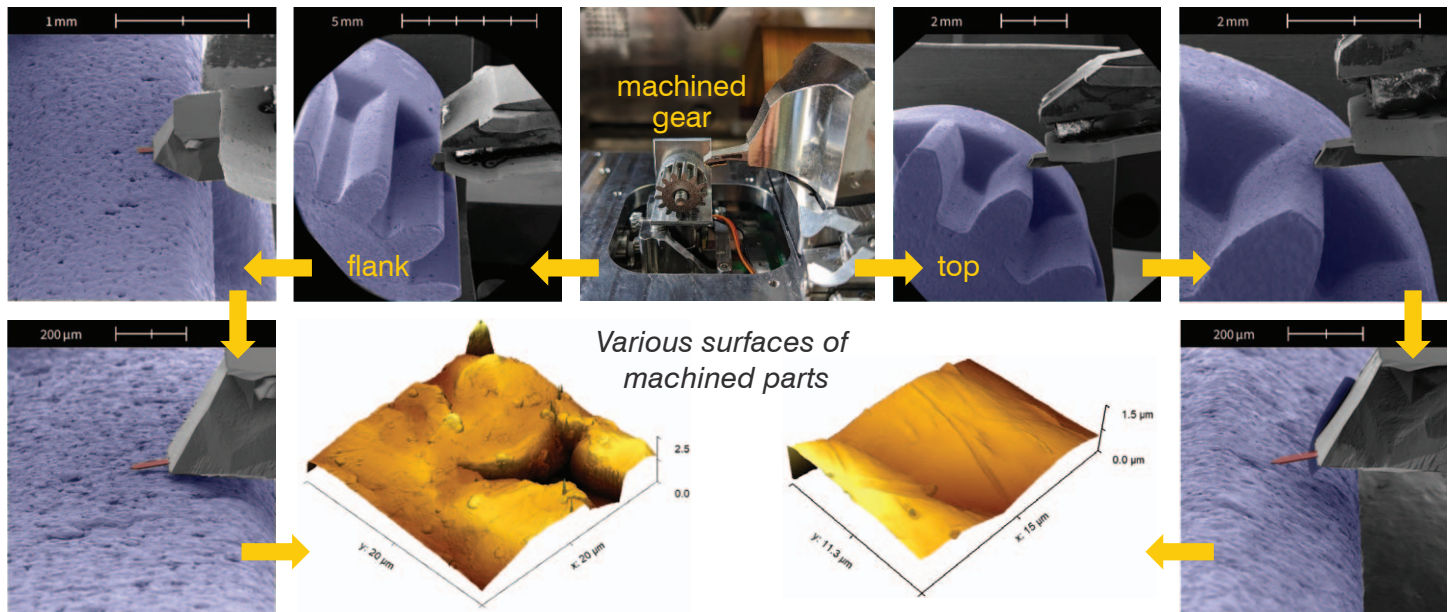
The SEM (Figure 2a) and AFM (Figure 2c) images show an oval region in the center of the line, which might lead to the conclusion that the VIA covers this entire area, ensuring a proper electrical connection. However, the elemental information acquired by the EDS image (Figure 2b) reveals a higher concentration of aluminum (Al) at the upper central part of the oval feature, surrounded by silicon (Si). This indicates that the VIA is not centered and is smaller than the oval feature observed in the SEM and AFM images. By combining this with the topographic information from AFM (Figure 3) we can determine that the VIA only contacts the top Al line, where the line is thinned, indicating an even weaker electronic connection.

It would not be possible to fully understand the details of this failure without the correlated information from SEM, AFM, and EDS. This correlative approach allows for more precise identification and characterization of defects, improving diagnostic accuracy. This way, the weaknesses in the design and production process can be better identified. The ability to analyze failures rapidly and accurately can reduce downtime and costs associated with troubleshooting and repairs, ultimately enhancing the reliability and performance of electronic devices.

# Quality Control & Failure Analysis

## Navigating Complex Regions using Advanced Atomic Force Microscopy

**Modes:** SEM, AFM Topography and Phase **Sample:** Machined Gear & Micromotor Elements



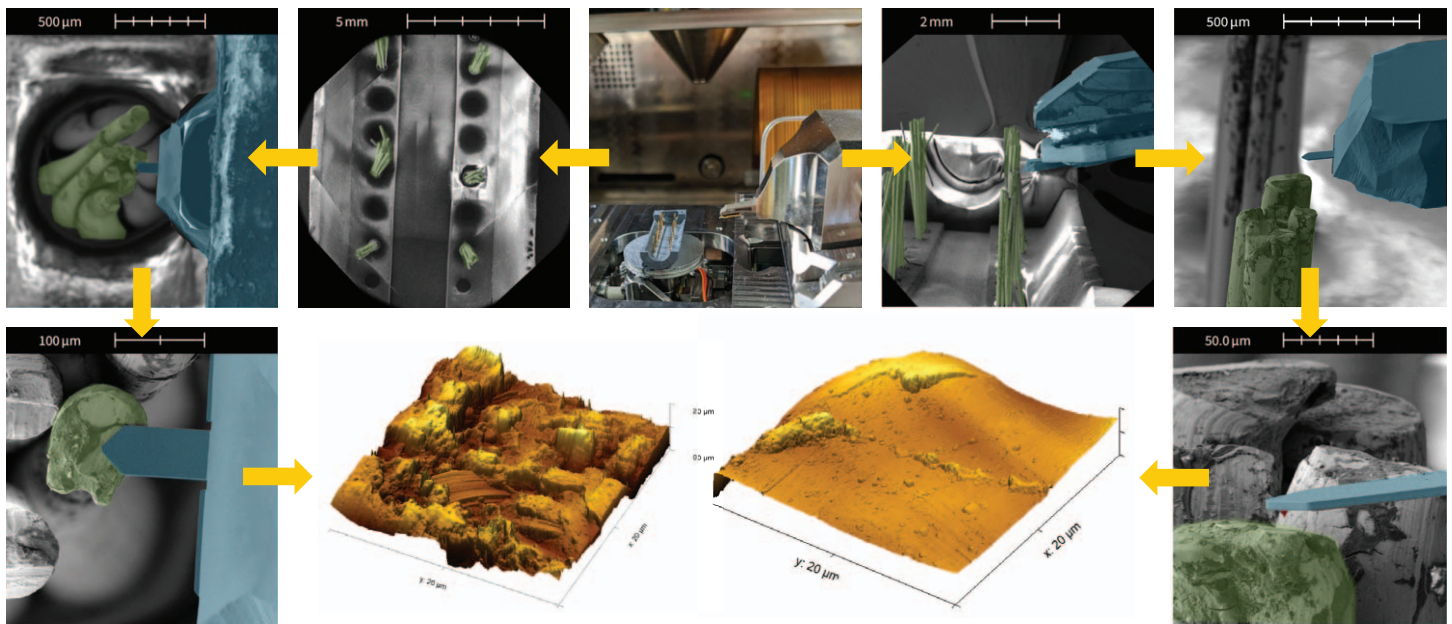
**(Figure 1)** AFM approach, analysis and characterization of intact machined gears. FusionScope's advanced SEM navigation ensures precise placement of the AFM tip on specific locations, enabling detailed investigation of surface characteristics such as roughness, pores, and cracks. The left-hand path demonstrates the AFM approach and analysis of a gear flank, while the right-hand path demonstrates the same for a top land.

Material processing is key to achieving desired properties across a diverse range of applications. Surface properties, in particular, play a crucial role, and Atomic Force Microscopy (AFM) is the tool of choice for this task due to its capability for 3D metrology with nanometer spatial resolution. Moreover, AFM offers advanced modes that provide access to electric, magnetic, mechanical, optical, and thermal properties. Here, we highlight two examples that demonstrate the advantage of using FusionScope for easy and fast analysis.

First, consider machined gears produced through techniques such as casting, sintering, or direct CNC preparation. These gears often undergo stress tests to evaluate performance under different operating conditions, making it essential to characterize them before, during, and after these tests. Traditional AFMs struggle with this task due to difficulties in positioning the tip at areas of interest. FusionScope, however, excels by enabling SEM identification of these areas followed by precise tip approach made possible by the platform's

## Service and Support

Since 1982, Quantum Design has been a long-standing manufacturer of cryogenic instrumentation, with a strong service and support history. Our global expansion in 1995, and the establishment of our distribution network in 1997, laid the foundation for comprehensive service and support, meeting our customers' needs both geographically and in their distinct research endeavors. In fact, it was our customers who directly inspired us to design the FusionScope, as we saw the need for a correlative microscopy platform. This commitment to listening and responding to our customers' unique needs drives our continuous innovation and excellence.



**(Figure 2)** AFM approach, analysis and characterization of micromotor brushes, made possible by the unique tilting and imaging capabilities of FusionScope. The left-hand path demonstrates an approach and analysis using a top-down perspective, while the right-hand path demonstrates an approach and analysis of another sample area in Profile View.

superb resolution and its 0-to-80-degree tilt angle of the sample and AFM scan head (Figure 1). These capabilities aid initial material processing, enable fast examination of surface properties, and help track wear effects.

The second example involves a micromotor with rotors that are electrically conducted by brushes. Motor performance heavily depends on the interaction regions, making the characterization of both elements after stress tests

crucial for identifying abrasive behavior and material cross-contamination. FusionScope's combined SEM and AFM capabilities are ideal for positioning the cantilever on areas of interest, as seen in Figure 2. The morphological information gathered is essential for understanding wear and potential failure processes.

Product warranty	12 months
Regulatory compliance	CE
Service	Dedicated Field Service Engineer

*“The QD service team has provided professional, responsive, and thorough support over many years... This has allowed our research group to publish numerous academic papers relating to material discovery and characterization.”*

– Dr. Hongjun Niu

# fusion scope®



Quantum Design USA  
www.qdusa.com



Quantum Design China  
www.qd-china.com



Quantum Design Europe  
www.qd-europe.com



Quantum Design India  
www.qd-india.com



Quantum Design Japan  
www.qd-japan.com



Quantum Design Korea  
www.qdkorea.com



Quantum Design Latin America  
www.qd-latam.com



QD Singapore  
www.qd-singapore.com

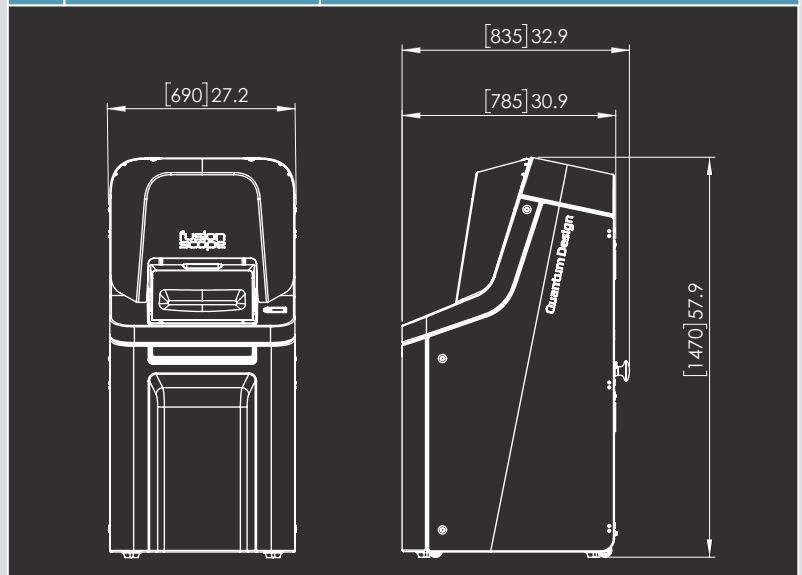


QD Taiwan  
www.qd-taiwan.com



QD UK & Ireland  
www.qd-uki.co.uk

Specifications*		
AFM	Scan Range XY: Scan Range Z: Imaging Noise: Cantilever Probes: Measurement Modes:	22 x 22 $\mu\text{m}$ (Closed Loop) 11 $\mu\text{m}$ < 50 pm @ 1 kHz Self-Sensing Piezoresistive Contact, Dynamic, FIRE, MFM, C-AFM, EFM...
SEM	Electron Source: Acceleration Voltage: Probe Current: Magnification: Detectors:	Thermal Field Emission 3.5 kV to 15 kV 5 pA to 2.5 nA (300 pA typical) 25 X to 200,000 X In-Chamber SE (Everhart-Thornley)
EDS	Detector Type: Energy Resolution: Window Type: Detection Range: Spectrum Mode: Elemental Mapping:	Silicon Drift Detector (SDD) < 133 eV @ Mn-K $\alpha$ @ 14k cps @ 1 $\mu\text{s}$ peaking time Graphene Carbon – Uranium Yes Yes
Sample	Max. Sample Diameter: Max. Sample Height: Max. Sample Weight: Eucentric Alignment:	20 mm (12 mm Full Correlated Mode) 20 mm 500 g Automatic
Chamber	Chamber Vacuum: Pumping Time: Trunnion Tilt:	10 to 100 $\mu\text{Torr}$ (typical) < 5 min -10 to 80 Degrees
System	Power: Dimensions (W x L x H): Weight:	200 to 230 VAC; 50/60 Hz; Single Phase 15 A 690 x 835 x 1470 mm 330 kg



\* Specifications subject to change without notice. 1081-300-01 Rev. E0



**Quantum Design**

Quantum Design, Inc.  
10307 Pacific Center Court, San Diego, CA 92121  
Tel: 858-481-4400 Fax: 858-481-7410  
www.fusionscope.com | info@fusionscope.com