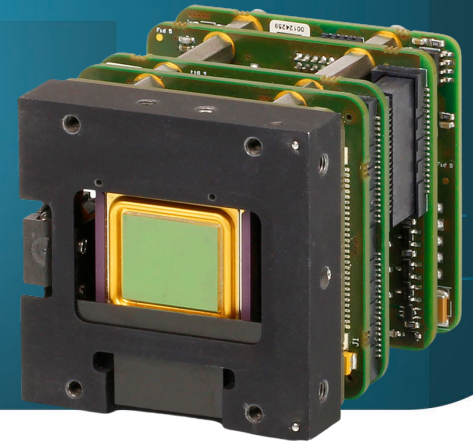


**SMALL, HIGH PERFORMANCE  
UNCOOLED THERMAL MODULE**

**Xenics**  
EXOSENS GROUP

# XTM+ 640 Series



*SMALL, HIGH PERFORMANCE UNCOOLED  
THERMAL MODULE*

## KEY FEATURES



**COMPACT SIZE**



**FRAME RATES UP TO 60 Hz**



**EASY CONNECTIVITY VIA  
MULTIPLE INTERFACES**

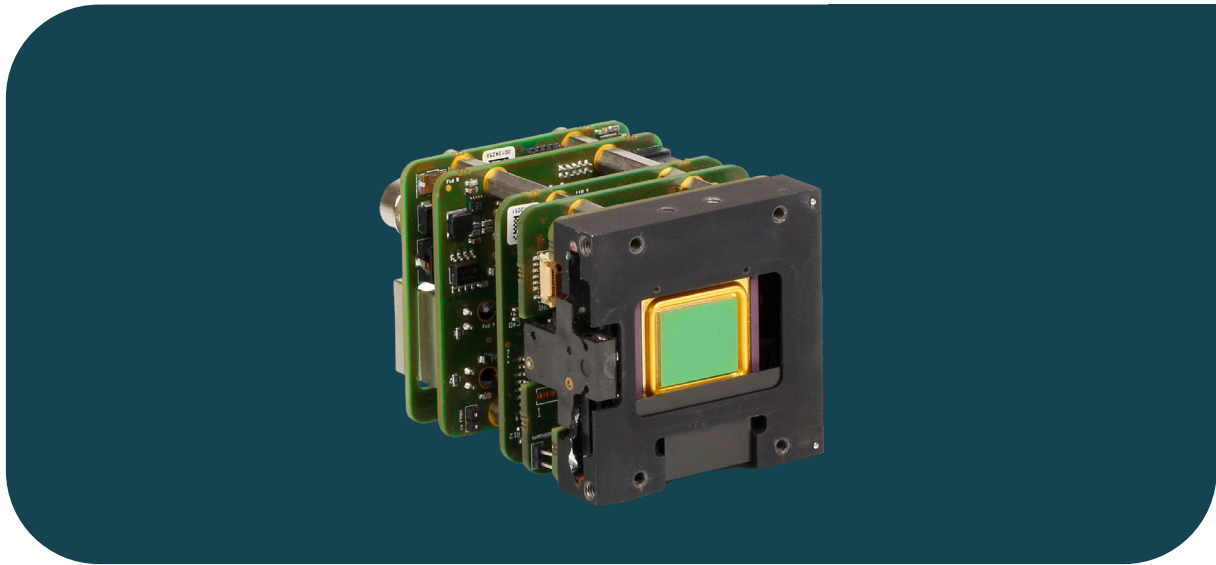
The XTM+ 640 Series is based on an uncooled microbolometer detector with a 640 x 480 pixel resolution.

The XTM+ 640 offers frame rates up to 60 Hz and lower detector NETD options (< 30 mK available upon request).

The modules come with either a CameraLink, GigE Vision or QTE Samtec interface and feature low weight and power.



# XTM+ 640 Series



## KEY PERFORMANCES

Image format / Pixel pitch	640 x 480 pixels / 17 $\mu$ m
Integration type	Rolling shutter
Spectral range	8 - 14 $\mu$ m
Max frame rate (full frame)	60 Hz or 9 Hz (CL; GigE; 16bit DV)
Power consumption	2.9 W (CL); 4.6 W (GigE); 2.7 W (16bit DV)
Power supply voltage	DC 12 V (CL); DC 12 V or PoE (Power over Ethernet)(GigE); DC 3.3 V (16bit DV)

## FUNCTIONS & INTERFACES

Digital output format	CL; GigE; 16bit DV
Ambient operating temperature range	From -40°C to +60°C; also available in temperature range 0°C - 50°C
Storage temperature	From -40°C to +85°C
Detector NETD	<50 mK (at 30Hz, 300K, F/1); <30 mK (available upon request)
Shock / Vibration	40 g, 11 ms, MIL-STD810G, MIL-STD883J / 5 g (20 to 2000 Hz), MIL-STD810G, MIL-STD883J

## PRODUCT SELECTOR GUIDE

XEN-000637 (XTM+ 640 GigE)	XEN-000642 (XTM+ 640 GigE [9 Hz])
XEN-000638 (XTM+ 640 CL)	XEN-000643 (XTM+ 640 CL [9 Hz])
XEN-000635 (XTM+ 640 16bit DV)	XEN-000640 (XTM+ 640 16bit DV [9 Hz])