

OEM LASER DIODE MODULES

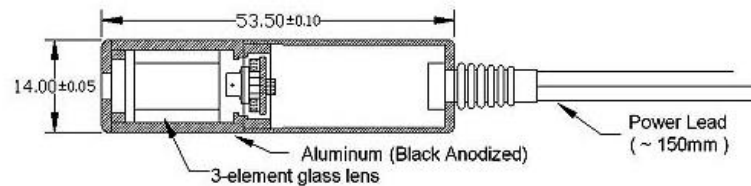
Cost effective **Violet** / **Blue** / **Green** / **Red** / **Infrared**
laser modules for integration from 405nm to 1550nm

LA Product - High Optical Output Power

Features

- Auto optical output power control
- Low operating power consumption
- Polarity reverse protected
- High temperature operation is optional
- Focus adjustable by user
- Optical output assigned by customer
- Saving cost diode (T3 type) is available
- Case Material : Black Anodized (Aluminum)
- Operation Voltage : 3V/5V/12V/24V

Module size chart



Available laser diodes wavelength from 405-980nm

	5mW	7mW	10mW	20mW	30mW	40mW	50mW	90mW	100mW up
405nm	●		●	●			●	●	●
455nm							●	●	●
488nm							●	●	
505nm					●				
515nm			●	●	●		●		●
635nm	●	●	●	●	●				●
650nm	●	●	●	●	●				●
660nm						●			●
670nm		●	●						
680nm					●				
780nm	●		●	●			●	●	●
808nm							●		●
830nm					●	●			●
850nm	●				●		●	●	●
940nm									●
980nm							●	●	●

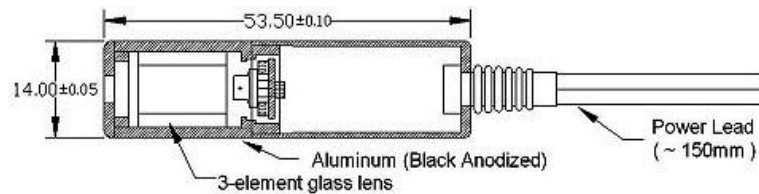
MTTF > 10,000 hrs

LAI Product - Casing is isolated from power line

Features

- Auto optical output power control
- Low operating power consumption
- Polarity reverse protected
- High temperature operation is optional
- Focus adjustable by user
- Optical output assigned by customer
- Saving cost diode (T3 type) is available
- Case Material : Black Anodized (Aluminum)
- Available with Diffractive or Cylinder Optics
- Operation Voltage : 3V/5V/12V/24V

Module size chart



Available laser diodes wavelength from 405-980nm

	5mW	7mW	10mW	20mW	30mW	40mW	50mW	90mW	100mW up
405nm	●		●	●			●	●	●
455nm							●	●	●
488nm							●	●	
505nm					●				
515nm			●	●	●		●		●
635nm	●	●	●	●	●				●
650nm	●	●	●	●	●				●
660nm						●			●
670nm		●	●						
680nm					●				
780nm	●		●	●			●	●	●
808nm							●		●
830nm					●	●			●
850nm	●				●		●	●	●
940nm									●
980nm							●	●	●

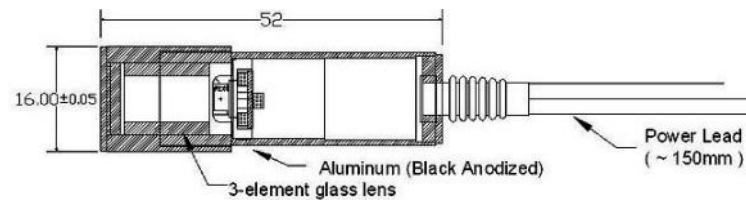
MTTF > 10,000 hrs

ALA Product - Optic Focus Adjustable

Features

- Auto optical output power control
- Low operating power consumption
- Polarity reverse protected
- High temperature operation is optional
- Focus adjustable by user
- Optical output assigned by customer
- Saving cost diode (T3 type) is available
- Case Material : Black Anodized (Aluminum)
- Operation Voltage : 3V/5V/12V/24V

Module size chart



Available laser diodes wavelength from 405-980nm

	5mW	7mW	10mW	20mW	30mW	40mW	50mW	90mW	100mW up
405nm	●		●	●			●	●	●
455nm							●	●	●
488nm							●	●	
505nm					●				
515nm			●	●	●		●		●
635nm	●	●	●	●	●				●
650nm	●	●	●	●	●				●
660nm						●			●
670nm		●	●						
680nm					●				
780nm	●		●	●			●	●	●
808nm							●		●
830nm					●	●			●
850nm	●				●		●	●	●
940nm									●
980nm							●	●	●

MTTF > 10,000 hrs

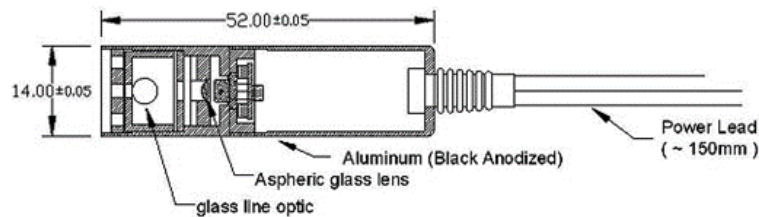
LAL Product - Fine Line Generator

Features

- Auto optical output power control
- Low operating power consumption
- Polarity reverse protected
- High temperature operation is optional
- Focus adjustable by user
- Optical output assigned by customer
- Saving cost diode (T3 type) is available
- Case Material : Black Anodized (Aluminum)
- Line width 1mm between 500mm distance
- Collimating lens/ Line optic : Cylinder Optics
- Operation Voltage : 3V/5V/12V/24V

Fan angle (degree)	Output efficiency
10 · 15 · 20	50%
30 · 40 · 50	70%

Module size chart



Available laser diodes wavelength from 405-980nm

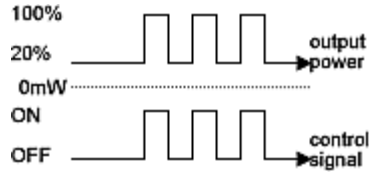
	5mW	7mW	10mW	20mW	30mW	40mW	50mW	90mW	100mW up
405nm	●		●	●			●	●	●
455nm							●	●	●
488nm							●	●	
505nm					●				
515nm			●	●	●		●		●
635nm	●	●	●	●	●				●
650nm	●	●	●	●	●				●
660nm						●			●
670nm		●	●						
680nm					●				
780nm	●		●	●			●	●	●
808nm							●		●
830nm					●	●			●
850nm	●				●		●	●	●
940nm									●
980nm							●	●	●

MTTF > 10,000 hrs

M2LA Product - External TTL Modulation Available

Features

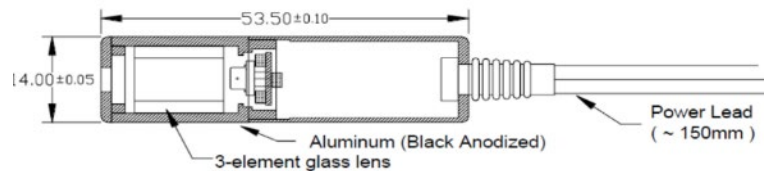
- Low operating power consumption
- Polarity reverse protected
- High temperature operation is optional
- Focus adjustable by user
- Saving cost diode (T3 type) is available
- Case Material : Black Anodized (Aluminum)
- Operation Voltage : 5V/12V



Available laser diodes wavelength from 405-980nm

	5mW	7mW	10mW	20mW	30mW	40mW	50mW	90mW	100mW up
405nm	●		●	●			●	●	●
455nm							●	●	●
488nm							●	●	
505nm					●				
515nm			●	●	●		●		●
635nm	●	●	●	●	●				●
650nm	●	●	●	●	●				●
660nm						●			●
670nm		●	●						
680nm					●				
780nm	●		●	●			●	●	●
808nm							●		●
830nm					●	●			●
850nm	●				●		●	●	●
940nm									●
980nm							●	●	●

Module size chart

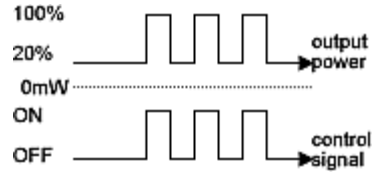


MTTF > 10,000 hrs

M4LA Product - External TTL Modulation Available (APC Type)

Features

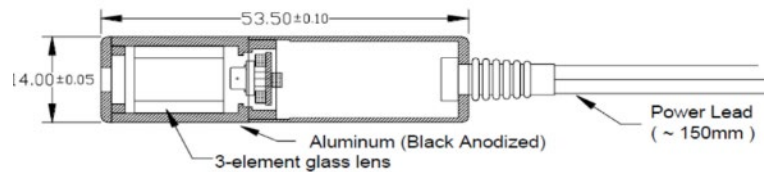
- Auto optical output power control
- Low operating power consumption
- Polarity reverse protected
- Various models available
- Focus adjustable by user
- Saving cost diode (T3 type) is available
- Case Material : Black Anodized (Aluminum)
- Operation Voltage : 5V/12V



Available laser diodes wavelength from 405-980nm

	5mW	7mW	10mW	20mW	30mW	40mW	50mW	90mW	100mW up
405nm	●		●	●			●	●	●
455nm							●	●	●
488nm							●	●	
505nm					●				
515nm			●	●	●		●		●
635nm	●	●	●	●	●				●
650nm	●	●	●	●	●				●
660nm						●			●
670nm		●	●						
680nm					●				
780nm	●		●	●			●	●	●
808nm							●		●
830nm					●	●			●
850nm	●				●		●	●	●
940nm									●
980nm							●	●	●

Module size chart

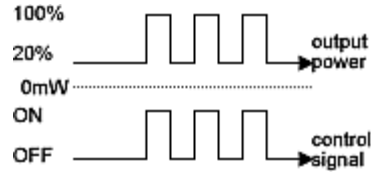


MTTF > 10,000 hrs

M5LA Product - External TTL Modulation Available (APC Type)

Features

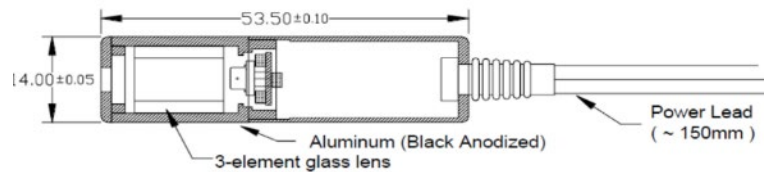
- Auto optical output power control
- Low operating power consumption
- Polarity reverse protected
- Various models available
- Focus adjustable by user
- Saving cost diode (T3 type) is available
- Case Material : Black Anodized (Aluminum)
- Operation Voltage : 5V/12V



Available laser diodes wavelength from 405-980nm

	5mW	7mW	10mW	20mW	30mW	40mW	50mW	90mW	100mW up
405nm	●		●	●			●	●	●
455nm							●	●	●
488nm							●	●	
505nm					●				
515nm			●	●	●		●		●
635nm	●	●	●	●	●				●
650nm	●	●	●	●	●				●
660nm						●			●
670nm		●	●						
680nm					●				
780nm	●		●	●			●	●	●
808nm							●		●
830nm					●	●			●
850nm	●				●		●	●	●
940nm									●
980nm							●	●	●

Module size chart



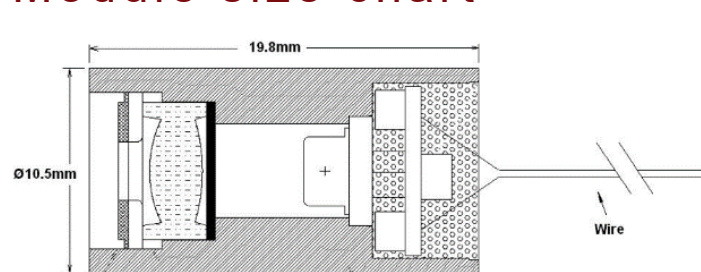
MTTF > 10,000 hrs

LQA Product - Copper tube is thicker than LQB

Features

- Auto optical output power control
- Low operating power consumption
- Polarity reverse protected
- Focus adjustable by user
- high temperature diode is available
- Saving cost diode (T3 type) is available
- **Case Material : Copper**
- **Operation Voltage : 2.7 to 5V DC**

Module size chart



Available laser diodes wavelength from 405-980nm

	5mW	7mW	10mW	20mW	30mW	40mW	50mW
405nm	●		●	●			●
455nm							●
515nm			●	●	●		●
635nm	●	●	●	●	●		
650nm	●	●	●	●	●		
660nm						●	
670nm		●	●				
680nm					●		
780nm	●		●	●			●
808nm							●
830nm					●	●	
850nm	●				●		●
980nm							●

MTTF > 10,000 hrs

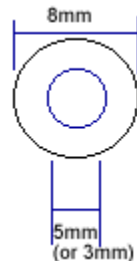
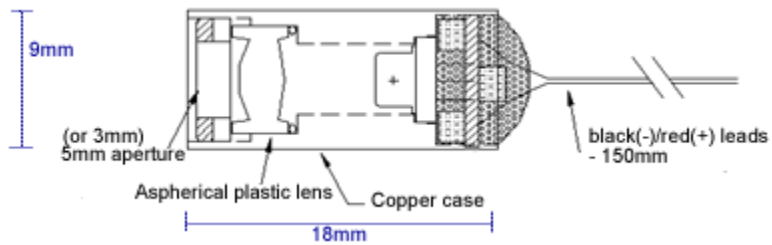
LQB Product - Compact size / APC control / the most popular type

Features

- Auto optical output power control
- Low operating power consumption
- Polarity reverse protected
- Focus adjustable by user
- high temperature diode is available
- Saving cost diode (T3 type) is available
- Case Material : Copper
- Operation Voltage : 2.7 to 5V DC



Module size chart



Available laser diodes wavelength from 405-980nm

	5mW	7mW	10mW	20mW	30mW	40mW	50mW
405nm	●		●	●			●
455nm							●
515nm			●	●	●		●
635nm	●	●	●	●	●		
650nm	●	●	●	●	●		
660nm						●	
670nm		●	●				
680nm					●		
780nm	●		●	●			●
808nm							●
830nm					●	●	
850nm	●				●		●
980nm							●

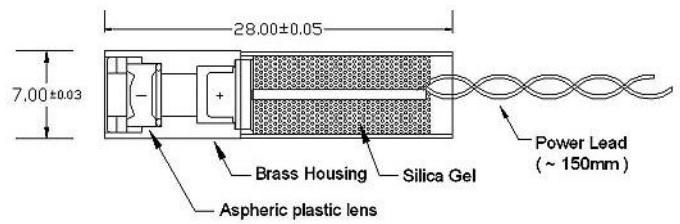
MTTF > 10,000 hrs

LS Product - Body Copper diameter smaller than LQB

Features

- Auto optical output power control
- Low operating power consumption
- Polarity reverse protected
- Focus adjustable by user
- high temperature diode is available
- Saving cost diode (T3 type) is available
- **Case Material : Copper**
- **Operation Voltage : 2.7 to 5V DC**

Module size chart



Available laser diodes wavelength from 405-980nm

	5mW	7mW	10mW	20mW	30mW	40mW	50mW
405nm	●		●	●			●
455nm							●
515nm			●	●	●		●
635nm	●	●	●	●	●		
650nm	●	●	●	●	●		
660nm						●	
670nm		●	●				
680nm					●		
780nm	●		●	●			●
808nm							●
830nm					●	●	
850nm	●				●		●
980nm							●

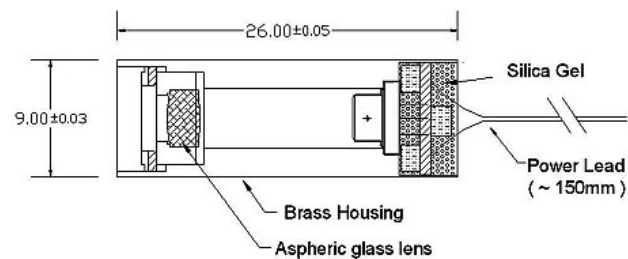
MTTF > 10,000 hrs

LQF Product - Circular aperture

Features

- Auto optical output power control
- Polarity reverse protected
- Various models available
- Focus distance assigned by customer
- Saving cost diode (T3 type) is available
- **Aspherical Glass Lens**
- **Case Material : Copper**
- **Operation Voltage : 2.7 to 5V DC**

Module size chart



Available laser diodes wavelength from 405-980nm

	5mW	7mW	10mW	20mW	30mW	40mW	50mW
405nm	●		●	●			●
455nm							●
515nm			●	●	●		●
635nm	●	●	●	●	●		
650nm	●	●	●	●	●		
660nm						●	
670nm		●	●				
680nm					●		
780nm	●		●	●			●
808nm							●
830nm					●	●	
850nm	●				●		●
980nm							●

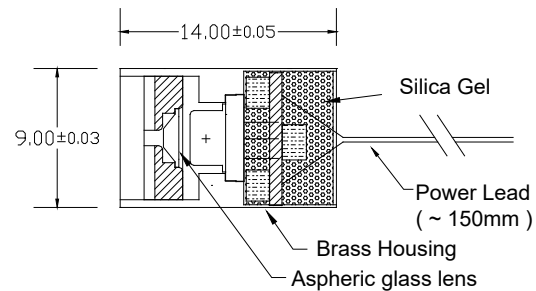
MTTF > 10,000 hrs

LQG Product - Small (1mm) diameter spot

Features

- Small diameter spot with high efficiency output
- Polarity reverse protected
- High temperature operation is optional
- Focus distance assigned by customer
- Saving cost diode (T3 type) is available
- **Aspherical Glass Lens**
- **Case Material : Copper**
- **Operation Voltage : 2.7 to 5V DC**

Module size chart



Available laser diodes wavelength from 405-980nm

	5mW	7mW	10mW	20mW	30mW	40mW	50mW
405nm	●		●	●			●
455nm							●
515nm			●	●	●		●
635nm	●	●	●	●	●		
650nm	●	●	●	●	●		
660nm						●	
670nm		●	●				
680nm					●		
780nm	●		●	●			●
808nm							●
830nm					●	●	
850nm	●				●		●
980nm							●

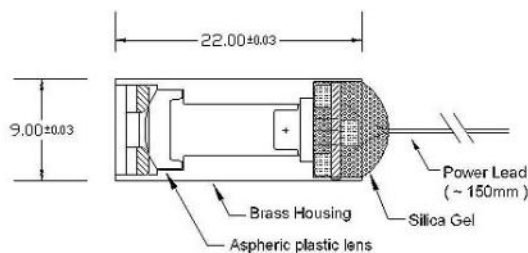
MTTF > 10,000 hrs

LR Product - Round Spot Type

Features

- Auto optical output power control
- Low operating power consumption
- Polarity reverse protected
- Focus adjustable by user
- high temperature diode is available
- Saving cost diode (T3 type) is available
- Aspheric plastic lens
- Case Material : Copper
- Operation Voltage : 2.7 to 5V DC

Module size chart



Available laser diodes wavelength from 405-980nm

	5mW	7mW	10mW	20mW	30mW	40mW	50mW
405nm	●		●	●			●
455nm							●
515nm			●	●	●		●
635nm	●	●	●	●	●		
650nm	●	●	●	●	●		
660nm						●	
670nm		●	●				
680nm					●		
780nm	●		●	●			●
808nm							●
830nm					●	●	
850nm	●				●		●
980nm							●

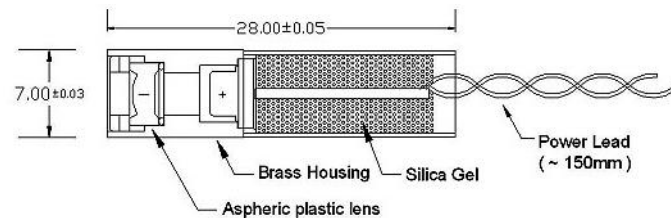
MTTF > 10,000 hrs

LT Product - with plastic line generator module

Features

- Auto optical output power control
- Low operating power consumption
- Polarity reverse protected
- Focus adjustable by user
- Saving cost diode (T3 type) is available
- Connection optional : leads wire or spring
- Case Material : Copper
- Operation Voltage : 2.7 to 5V DC

Module size chart



Available laser diodes wavelength from 405-980nm

	5mW	7mW	10mW	20mW	30mW	40mW	50mW
405nm	●		●	●			●
455nm							●
515nm			●	●	●		●
635nm	●	●	●	●	●		
650nm	●	●	●	●	●		
660nm						●	
670nm		●	●				
680nm					●		
780nm	●		●	●			●
808nm							●
830nm					●	●	
850nm	●				●		●
980nm							●

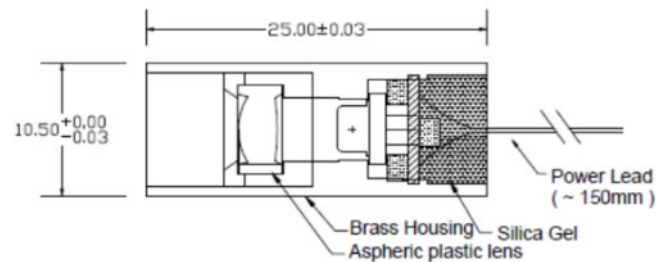
MTTF > 10,000 hrs

LTI Product - Casing is isolated from power line

Features

- Auto optical output power control
- Low operating power consumption
- Polarity reverse protected
- Focus adjustable by user
- Saving cost diode (T3 type) is available
- Connection optional : leads wire or spring
- Case Material : Copper
- Operation Voltage : 2.7 to 5V DC

Module size chart



Available laser diodes wavelength from 405-980nm

	5mW	7mW	10mW	20mW	30mW	40mW	50mW
405nm	●		●	●			●
455nm							●
515nm			●	●	●		●
635nm	●	●	●	●	●		
650nm	●	●	●	●	●		
660nm						●	
670nm		●	●				
680nm					●		
780nm	●		●	●			●
808nm							●
830nm					●	●	
850nm	●				●		●
980nm							●

MTTF > 10,000 hrs